



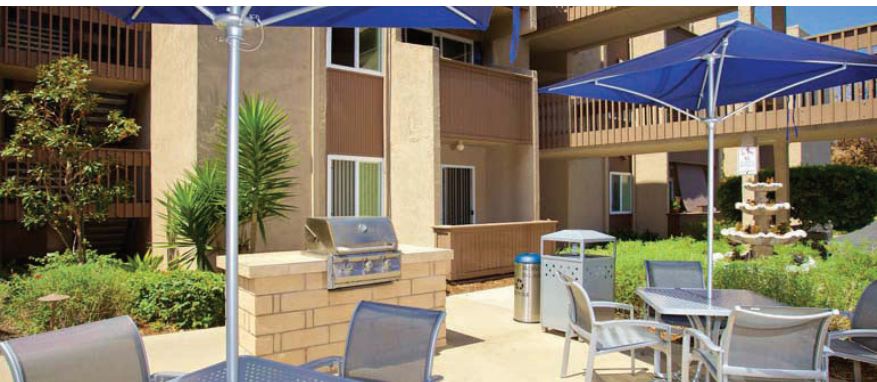
COASTAL LIVING WITH
LOCATION, STYLE AND
SPECTACULAR BAY VIEWS


*Pacific Bay
Club*
RENTAL COMMUNITY

4070 Huerfano Avenue
Pacific Beach, CA 92117



STUDIO, ONE BEDROOM AND TWO BEDROOM APARTMENT RESIDENCES FOR LEASE NEAR THE COAST!



COASTAL LIVING WITH LOCATION, STYLE AND SPECTACULAR BAY VIEWS AWAIT YOU AT PACIFIC BAY CLUB.

Life is more fun when everything's nearby and you have a beautiful apartment that you call home! Conveniently located off I-5 in the Bay Ho area, between North Clairemont and Pacific Beach, our community boasts great shopping, dining, and entertainment. Being just minutes from downtown San Diego, beautiful beaches and La Jolla, we embody the convenience you're looking for in beach-living! You'll be close to schools and just minutes from UTC, Mission Valley and the beach. Here you can enjoy spectacular sunsets and Mission Bay views, lush landscaping, a community swimming pool and smartly designed floorplans!

Come experience excellence in apartment living by the Bay. Pacific Bay Club offers studio, 1 bedroom and 2 bedroom apartments - selected apartments offer spectacular views of Mission Bay. The community offers beautifully landscaped grounds and complimentary poolside Wi-Fi. Ask about our newly renovated interiors in select apartment homes.

We are proudly a 100% smoke-free community. We welcome cats with additional deposit. Sorry, cosigners are not permitted.

COMMUNITY AMENITIES

- Fully-equipped fitness center
- Sparkling pool and spa area with complimentary WI-FI
- BBQ & Picnic area
- Located in beautiful Bay-Ho overlooking Mission Bay
- Assigned parking
- Elevator access
- Easy Access to I-5 and 805 freeways
- 24 Hour Maintenance dispatch service
- Courtesy patrol and parking monitoring
- Cats welcome with additional deposit, sorry no dogs
- Professional management office - open daily
- WE PROUDLY OFFER a Non- smoking community

APARTMENT AMENITIES

- Studios, 1, & 2 bedroom apartment homes
- Beautifully remodeled units available!
- Private patios or balconies
- Laundry facilities
- Neutral color palette
- Spacious floor plans
- Generous closet, linen & storage space
- Full appliance package includes range, microwave, dishwasher & refrigerator
- Furnished homes available in partnership with CORT; exclusive offer for residents.

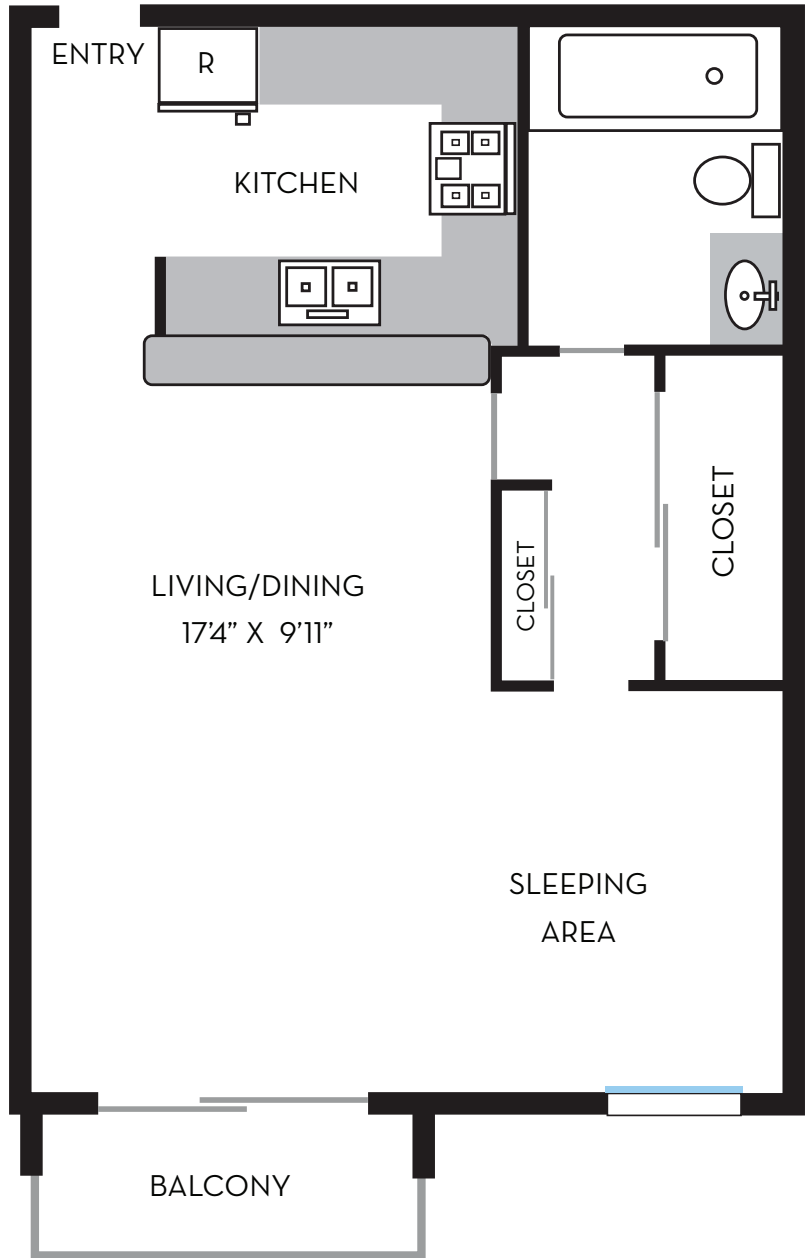
THE SOLEDAD

475 SQ. FT. STUDIO/1 BA

Available:

Deposit: \$.....

Unit#:



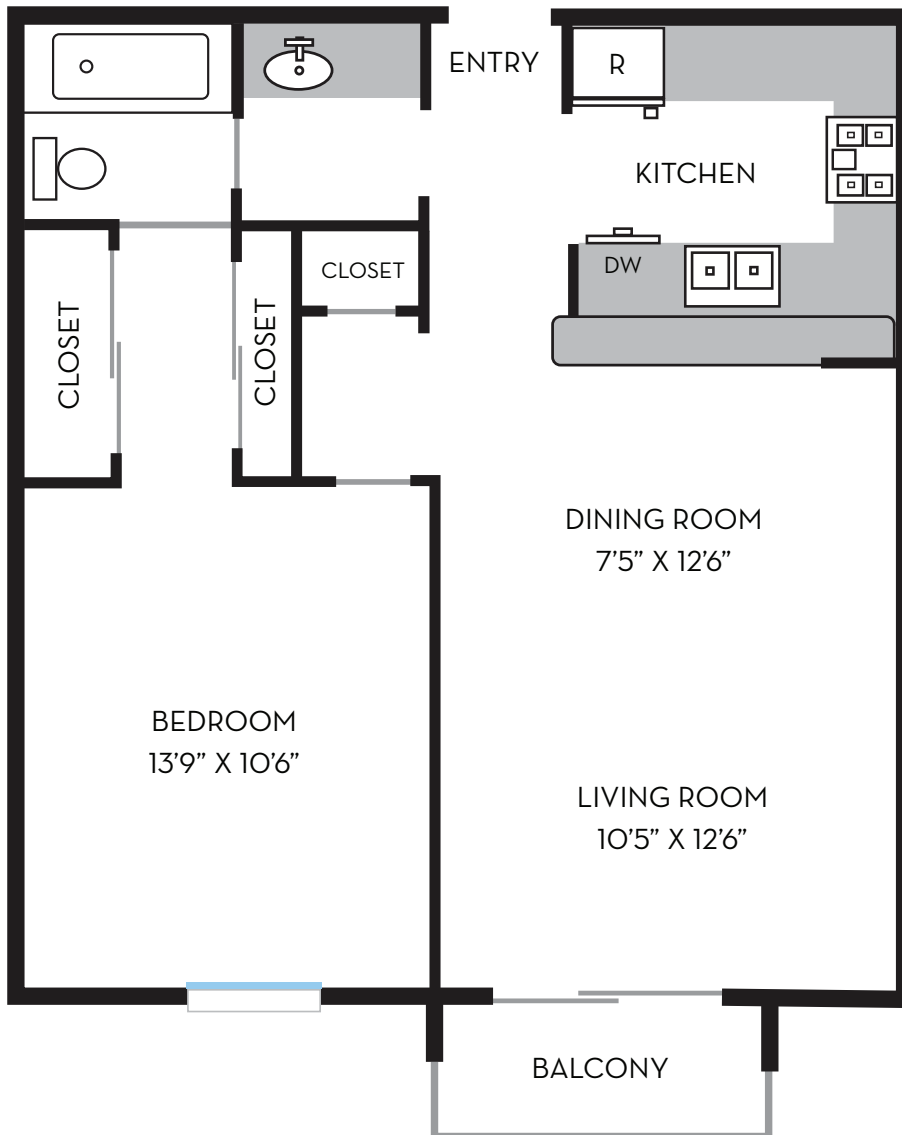
THE PINNACLE

650 SQ. FT. 1 BD/1 BA

Available:

Deposit: \$.....

Unit#:



THE NEWPORT

875 SQ. FT. 2 BD/1.5 BA

Available:

Deposit: \$.....

Unit#:

