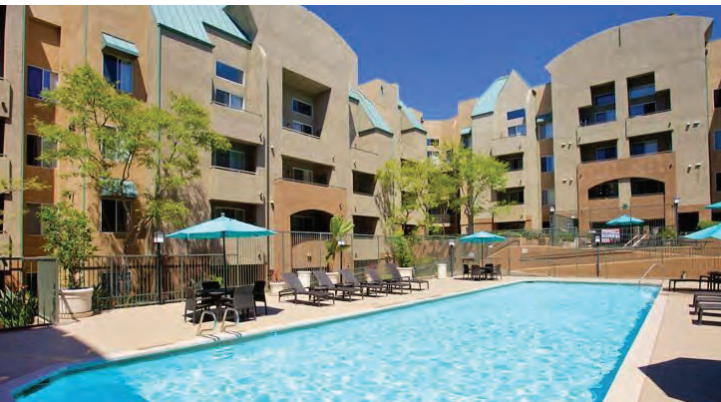




COSTA VERDE VILLAGE



8720 Costa Verde Boulevard, San Diego, CA 92122

(888) 533-6567

COSTAVERDEVILLAGE.COM

Professionally Owned and Managed By:



GARDEN
COMMUNITIES



YOU CAN
SHARE
THE DREAM



LIVE THE LIFESTYLE YOU DESIRE.
LOCATION, COMMUNITY AND
QUALITY IS ALL RIGHT HERE AT
COSTA VERDE VILLAGE.

INTERIOR FEATURES:

- Concierge Service
- Controlled Central Air & Heat
- Full-Size Washer And Dryer
- Generous Closet, Linen & Storage Space
- Icemakers In Select Units
- Kitchen Pantries
- Lofts / Vaulted Ceiling
- Mirrored Wardrobe Doors
- Neutral Color Palette
- Private Patios Or Balconies
- Wood-Burning Fireplace In Selected Units

COMMUNITY AMENITIES:

- 24 Hour Maintenance dispatch service
- Agua Bella - Exclusive fitness facility / classes / certified trainers
- BBQ & Picnic area
- Beautiful pools and spas located throughout the community
- Billiards
- Business center with computers and internet access
- Outdoor Playground
- Courtesy patrol and parking monitoring
- Easy Access to I-5 and I-805 freeways
- Free resident shuttle to nearby shops & restaurants
- In proximity to grocery stores, restaurants, entertainment and shopping
- Indoor and outdoor movie theaters
- Located near shopping, beaches, schools & dining
- Private clubhouse with gourmet kitchen & dining patio
- Professional management office - open daily
- Resident concierge services
- WE PROUDLY OFFER a Non- smoking community



**COSTA VERDE
VILLAGE**

STUDIO FLOORPLAN



COSTA VERDE VILLAGE

PRIVATE PATIOS

PICNIC & BBQ AREAS

POOLS & SPAS

BUSINESS CENTER

CHILDREN'S PLAY AREA

FREE RESIDENT SHUTTLE

MOVIE THEATRE

CONTROLLED CENTRAL AIR & HEAT

FULL-SIZE WASHER AND DRYER

GENEROUS CLOSET, LINEN
& STORAGE SPACE

ICEMAKERS IN SELECT UNITS

KITCHEN PANTRIES

LOFTS / VAULTED CEILING

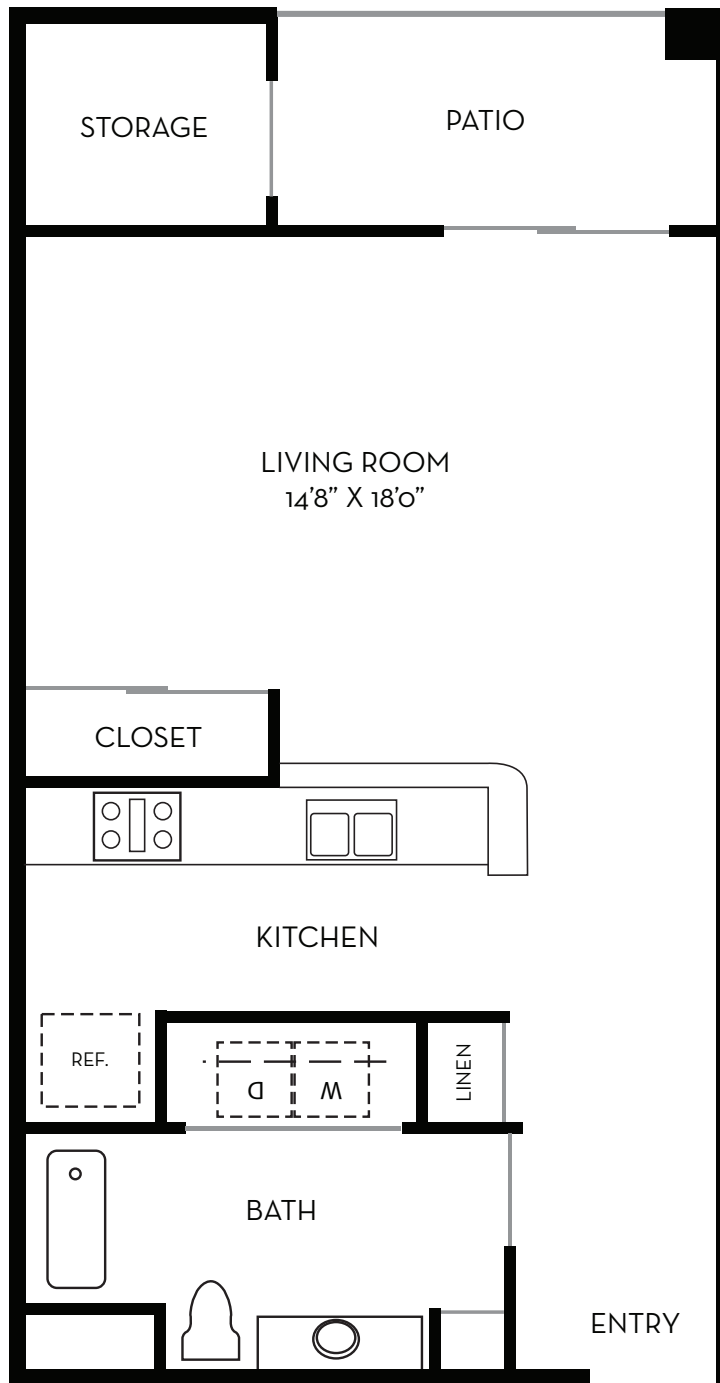
MIRRORED WARDROBE DOORS

NEUTRAL COLOR PALETTE

PRIVATE PATIOS OR BALCONIES

WOOD-BURNING FIREPLACE
IN SELECTED UNITS

COSTAVERDEVILLAGE.COM



THE SOLEDAD

Studio

1 bath

620 sq.ft.

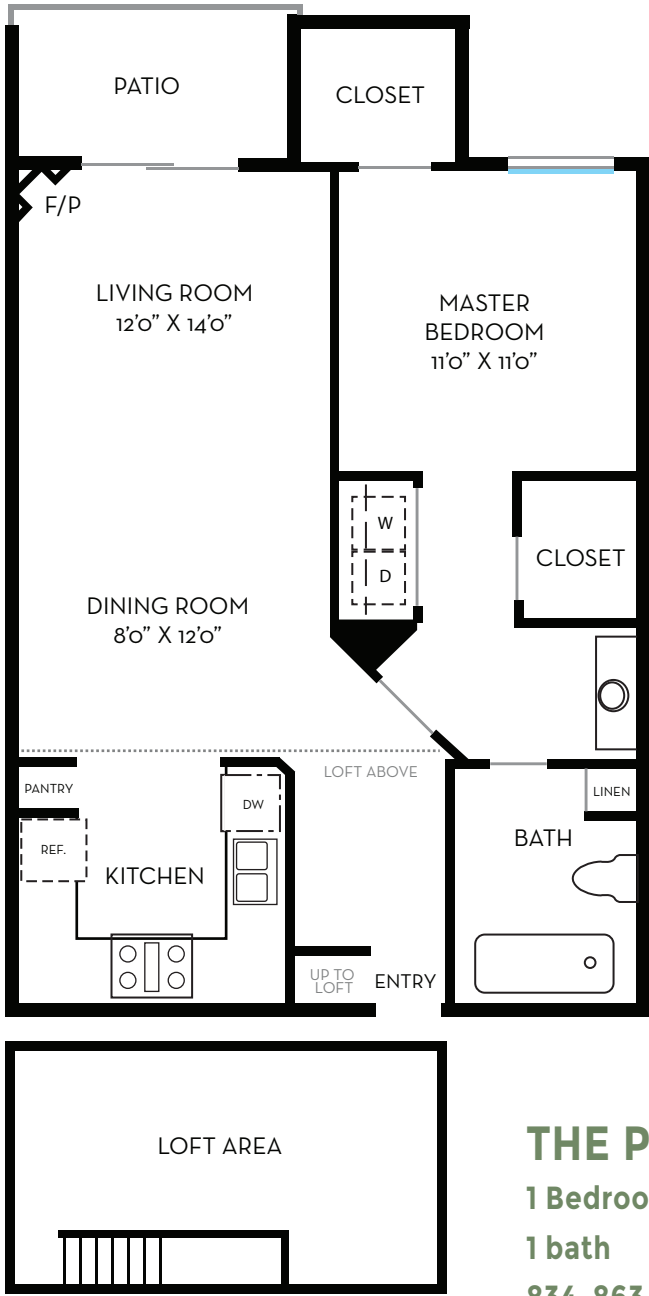
ONE BEDROOM FLOORPLAN



COSTA VERDE VILLAGE

- PRIVATE PATIOS
- PICNIC & BBQ AREAS
- POOLS & SPAS
- BUSINESS CENTER
- CHILDREN'S PLAY AREA
- FREE RESIDENT SHUTTLE
- MOVIE THEATRE
- CONTROLLED CENTRAL AIR & HEAT
- FULL-SIZE WASHER AND DRYER
- GENEROUS CLOSET, LINEN & STORAGE SPACE
- ICEMAKERS IN SELECT UNITS
- KITCHEN PANTRIES
- LOFTS / VAULTED CEILING
- MIRRORED WARDROBE DOORS
- NEUTRAL COLOR PALETTE
- PRIVATE PATIOS OR BALCONIES
- WOOD-BURNING FIREPLACE IN SELECTED UNITS

COSTAVERDEVILLAGE.COM



THE PINNACLE

1 Bedroom

1 bath

834-863 sq.ft.

THE PINNACLE W/ LOFT & FIREPLACE

1 bedroom

1 bath

962-991 sq.ft.

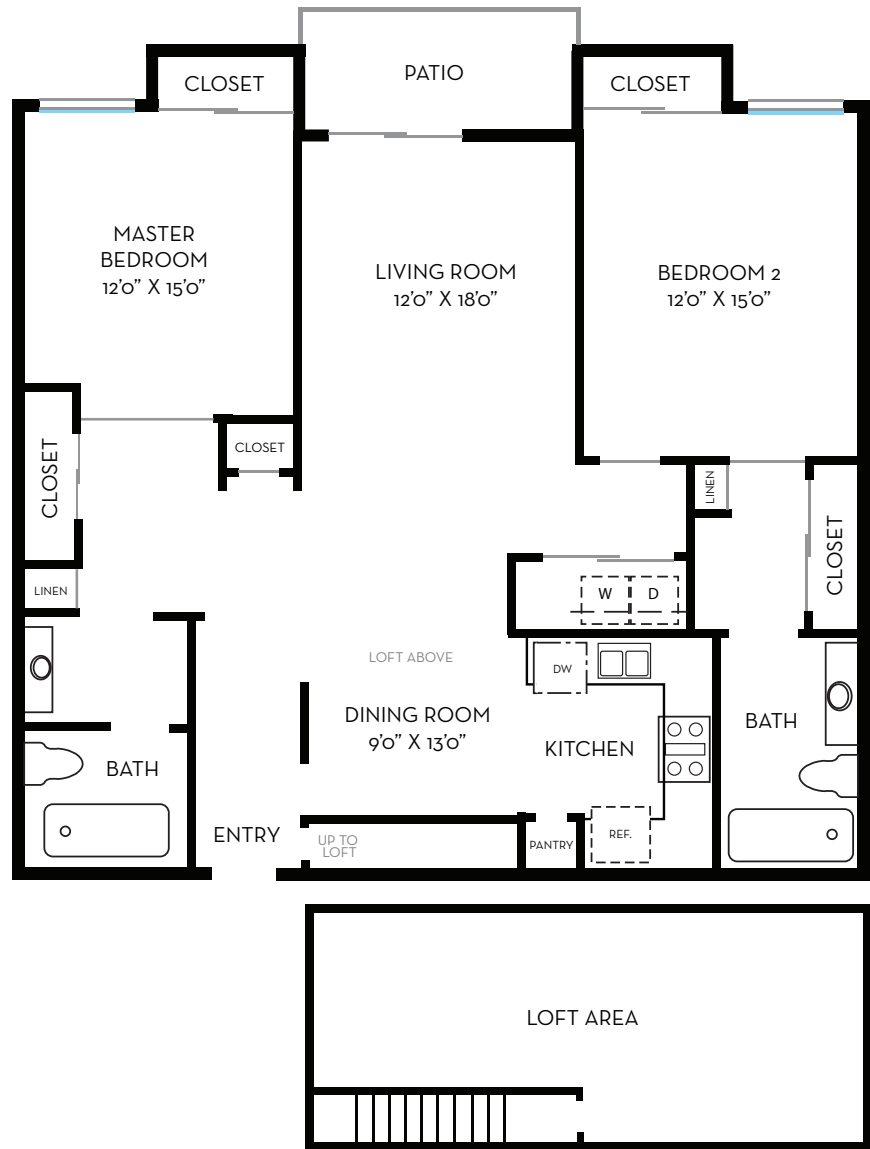
TWO BEDROOM FLOORPLAN



COSTA VERDE VILLAGE

- PRIVATE PATIOS
- PICNIC & BBQ AREAS
- POOLS & SPAS
- BUSINESS CENTER
- CHILDREN'S PLAY AREA
- FREE RESIDENT SHUTTLE
- MOVIE THEATRE
- CONTROLLED CENTRAL AIR & HEAT
- FULL-SIZE WASHER AND DRYER
- GENEROUS CLOSET, LINEN & STORAGE SPACE
- ICEMAKERS IN SELECT UNITS
- KITCHEN PANTRIES
- LOFTS / VAULTED CEILING
- MIRRORED WARDROBE DOORS
- NEUTRAL COLOR PALETTE
- PRIVATE PATIOS OR BALCONIES
- WOOD-BURNING FIREPLACE IN SELECTED UNITS

COSTAVERDEVILLAGE.COM



THE NEWPORT

2 Bedrooms
2 bath
1,162-1.234 sq.ft.

THE NEWPORT

W/ LOFT
2 Bedrooms
2 bath
1,289-1.361 sq.ft.

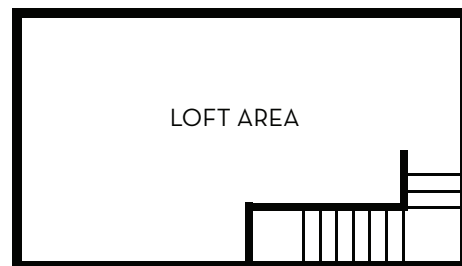
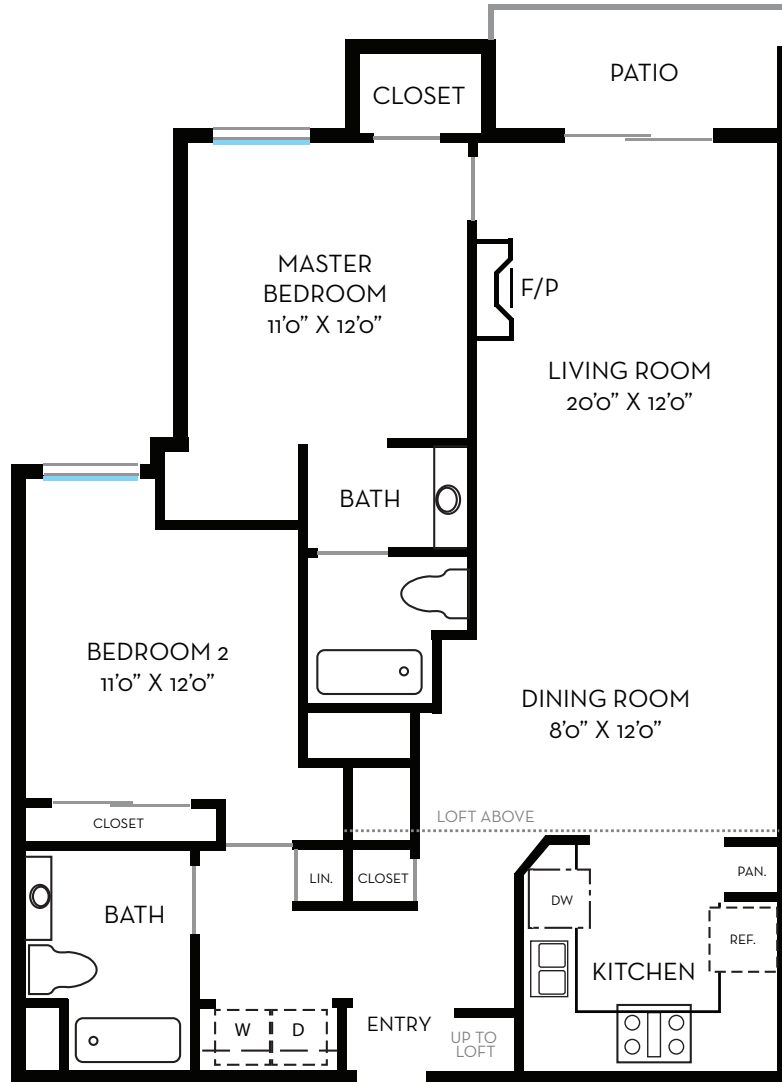
TWO BEDROOM FLOORPLAN



COSTA VERDE VILLAGE

- PRIVATE PATIOS
- PICNIC & BBQ AREAS
- POOLS & SPAS
- BUSINESS CENTER
- CHILDREN'S PLAY AREA
- FREE RESIDENT SHUTTLE
- MOVIE THEATRE
- CONTROLLED CENTRAL AIR & HEAT
- FULL-SIZE WASHER AND DRYER
- GENEROUS CLOSET, LINEN & STORAGE SPACE
- ICEMAKERS IN SELECT UNITS
- KITCHEN PANTRIES
- LOFTS / VAULTED CEILING
- MIRRORED WARDROBE DOORS
- NEUTRAL COLOR PALETTE
- PRIVATE PATIOS OR BALCONIES
- WOOD-BURNING FIREPLACE IN SELECTED UNITS

COSTAVERDEVILLAGE.COM



THE CORONADO

2 Bedrooms
2 bath
1,102-1,157 sq.ft.

THE CORONADO W/ LOFT & FIREPLACE

2 Bedrooms
2 bath
1,258-1,325 sq.ft.

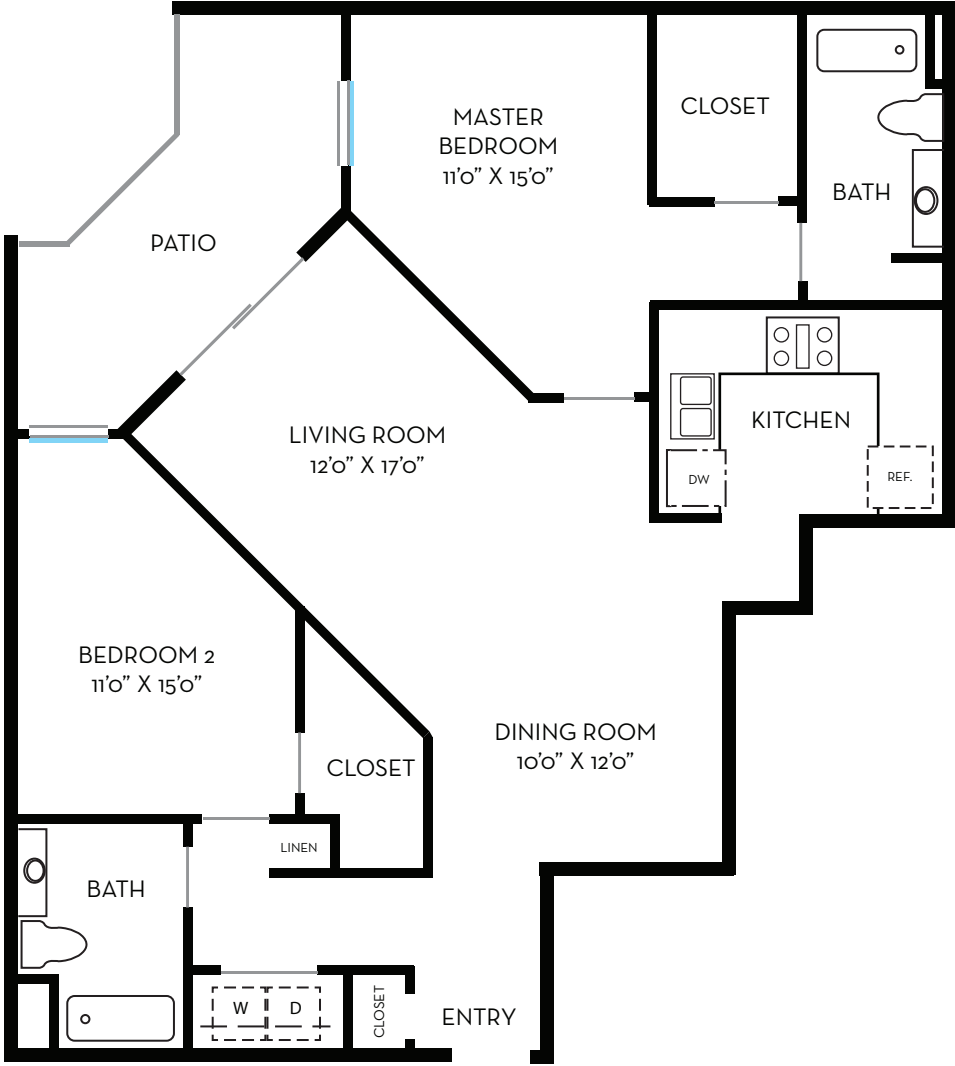
TWO BEDROOM FLOORPLAN



COSTA VERDE VILLAGE

- PRIVATE PATIOS
- PICNIC & BBQ AREAS
- POOLS & SPAS
- BUSINESS CENTER
- CHILDREN'S PLAY AREA
- FREE RESIDENT SHUTTLE
- MOVIE THEATRE
- CONTROLLED CENTRAL AIR & HEAT
- FULL-SIZE WASHER AND DRYER
- GENEROUS CLOSET, LINEN & STORAGE SPACE
- ICEMAKERS IN SELECT UNITS
- KITCHEN PANTRIES
- LOFTS / VAULTED CEILING
- MIRRORED WARDROBE DOORS
- NEUTRAL COLOR PALETTE
- PRIVATE PATIOS OR BALCONIES
- WOOD-BURNING FIREPLACE IN SELECTED UNITS

COSTAVERDEVILLAGE.COM



THE BELMONT

2 Bedrooms
2 bath
1,176-1,195 sq.ft.

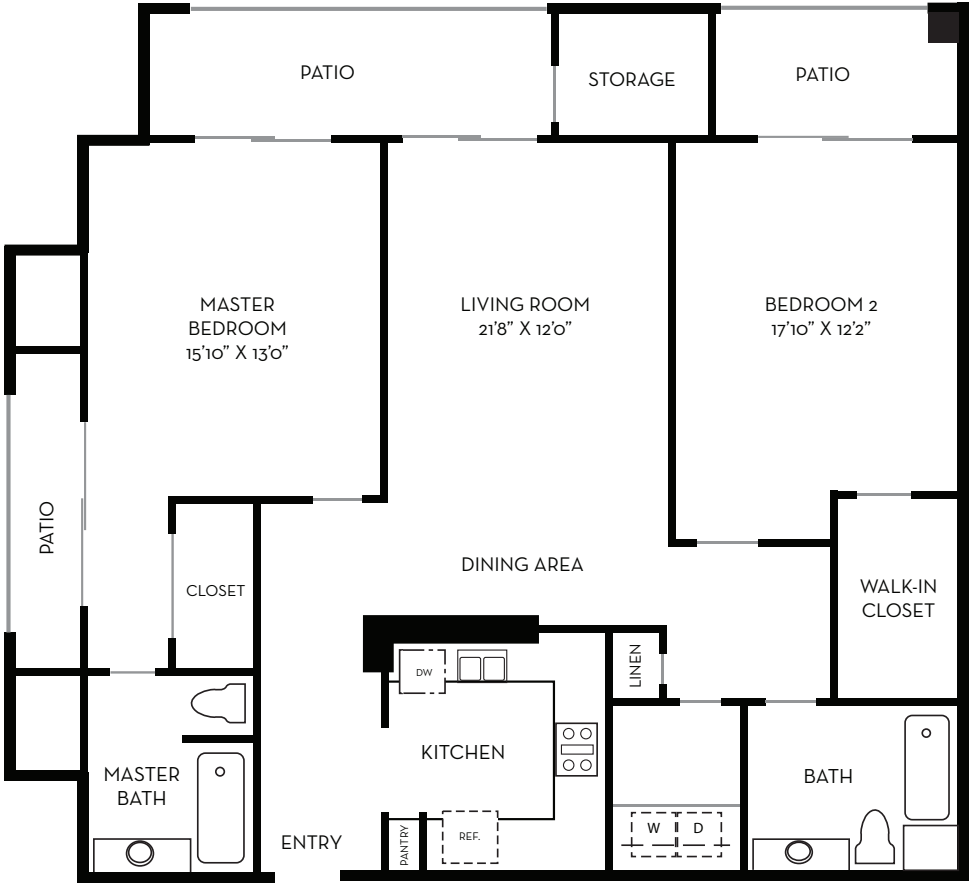
TWO BEDROOM FLOORPLAN



COSTA VERDE VILLAGE

- PRIVATE PATIOS
- PICNIC & BBQ AREAS
- POOLS & SPAS
- BUSINESS CENTER
- CHILDREN'S PLAY AREA
- FREE RESIDENT SHUTTLE
- MOVIE THEATRE
- CONTROLLED CENTRAL AIR & HEAT
- FULL-SIZE WASHER AND DRYER
- GENEROUS CLOSET, LINEN & STORAGE SPACE
- ICEMAKERS IN SELECT UNITS
- KITCHEN PANTRIES
- LOFTS / VAULTED CEILING
- MIRRORED WARDROBE DOORS
- NEUTRAL COLOR PALETTE
- PRIVATE PATIOS OR BALCONIES
- WOOD-BURNING FIREPLACE IN SELECTED UNITS

COSTAVERDEVILLAGE.COM



THE CABRILLO

2 Bedrooms

2 bath

1,477 sq.ft.

TWO BEDROOM FLOORPLAN



COSTA VERDE VILLAGE

- PRIVATE PATIOS
- PICNIC & BBQ AREAS
- POOLS & SPAS
- BUSINESS CENTER
- CHILDREN'S PLAY AREA
- FREE RESIDENT SHUTTLE
- MOVIE THEATRE
- CONTROLLED CENTRAL AIR & HEAT
- FULL-SIZE WASHER AND DRYER
- GENEROUS CLOSET, LINEN & STORAGE SPACE
- ICEMAKERS IN SELECT UNITS
- KITCHEN PANTRIES
- LOFTS / VAULTED CEILING
- MIRRORED WARDROBE DOORS
- NEUTRAL COLOR PALETTE
- PRIVATE PATIOS OR BALCONIES
- WOOD-BURNING FIREPLACE IN SELECTED UNITS

COSTAVERDEVILLAGE.COM



THE LAGUNA

2 Bedrooms

2 bath

1,380 sq.ft.

THE LAGUNA

W/ LOFT & FIREPLACE

2 Bedrooms

2 bath

1,500 sq.ft.

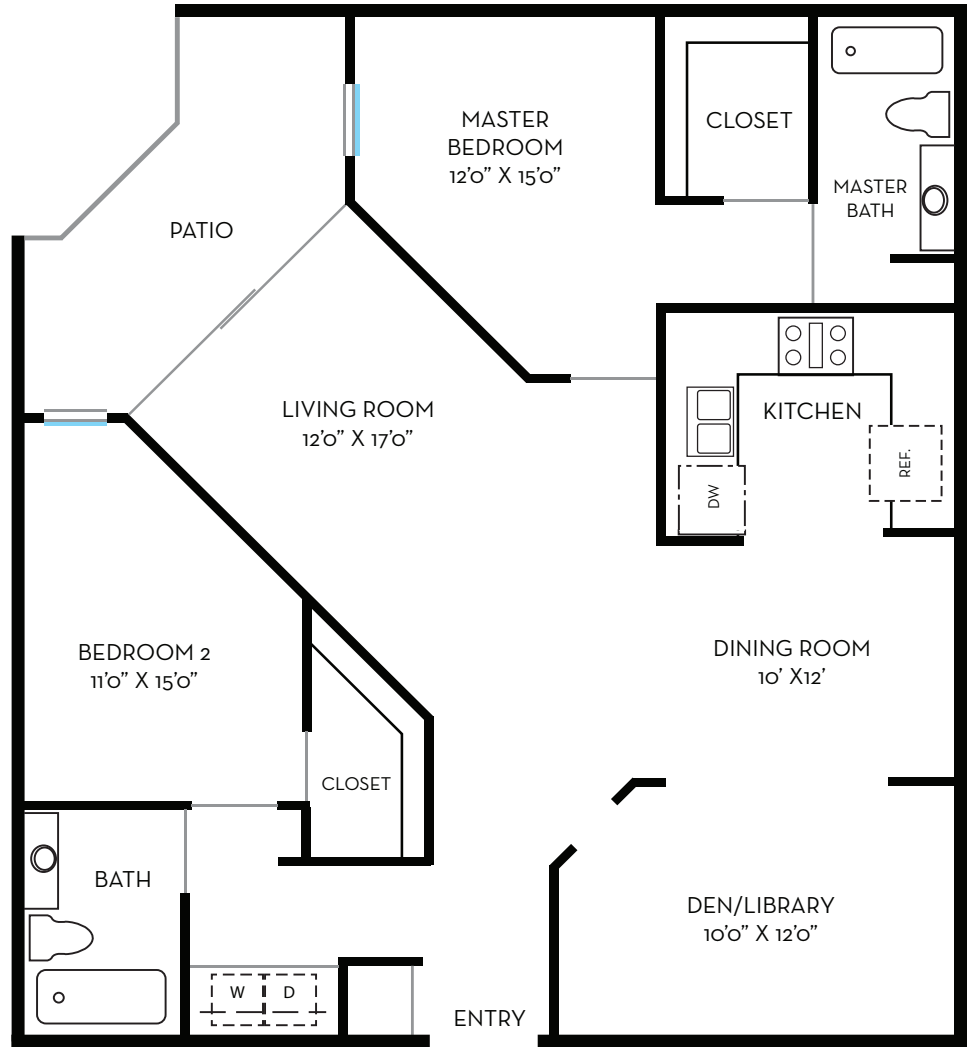
TWO BEDROOM FLOORPLAN



COSTA VERDE VILLAGE

- PRIVATE PATIOS
- PICNIC & BBQ AREAS
- POOLS & SPAS
- BUSINESS CENTER
- CHILDREN'S PLAY AREA
- FREE RESIDENT SHUTTLE
- MOVIE THEATRE
- CONTROLLED CENTRAL AIR & HEAT
- FULL-SIZE WASHER AND DRYER
- GENEROUS CLOSET, LINEN & STORAGE SPACE
- ICEMAKERS IN SELECT UNITS
- KITCHEN PANTRIES
- LOFTS / VAULTED CEILING
- MIRRORED WARDROBE DOORS
- NEUTRAL COLOR PALETTE
- PRIVATE PATIOS OR BALCONIES
- WOOD-BURNING FIREPLACE IN SELECTED UNITS

COSTAVERDEVILLAGE.COM



THE LAKEVIEW

2 Bedrooms + Den

2 bath

1,369-1,477 sq.ft.

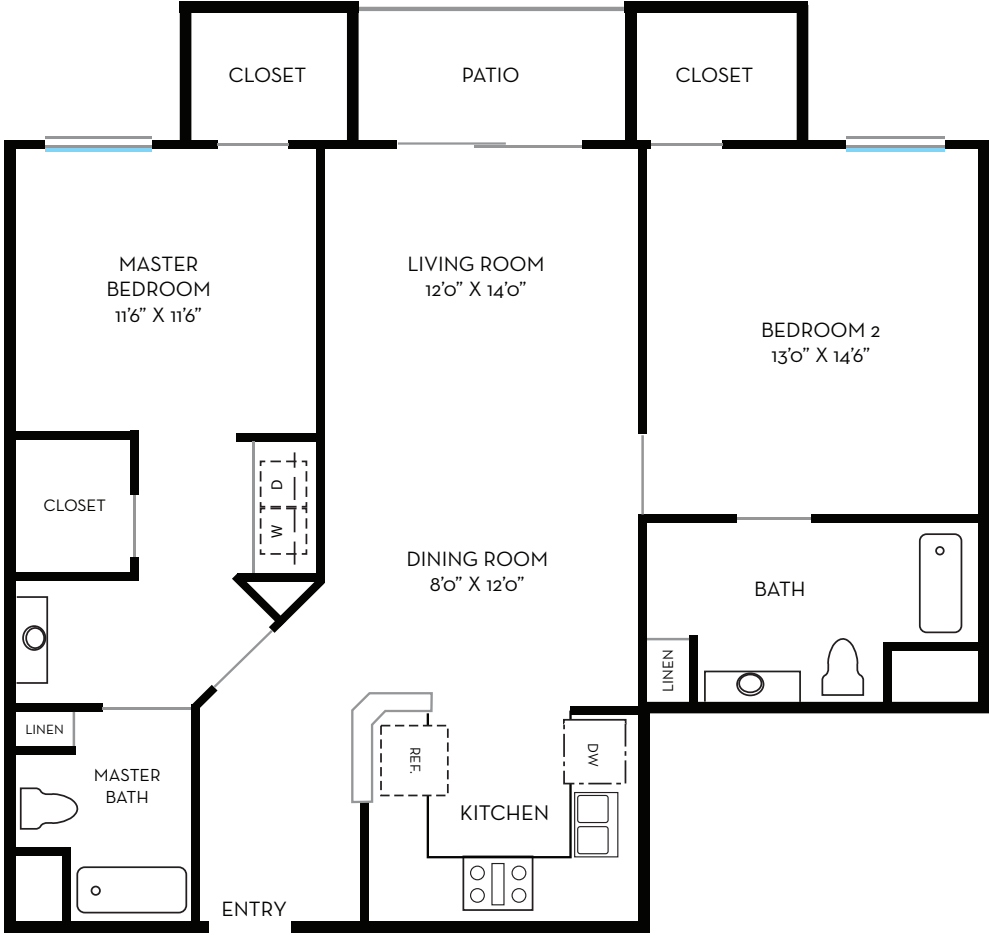
TWO BEDROOM FLOORPLAN



COSTA VERDE VILLAGE

- PRIVATE PATIOS
- PICNIC & BBQ AREAS
- POOLS & SPAS
- BUSINESS CENTER
- CHILDREN'S PLAY AREA
- FREE RESIDENT SHUTTLE
- MOVIE THEATRE
- CONTROLLED CENTRAL AIR & HEAT
- FULL-SIZE WASHER AND DRYER
- GENEROUS CLOSET, LINEN & STORAGE SPACE
- ICEMAKERS IN SELECT UNITS
- KITCHEN PANTRIES
- LOFTS / VAULTED CEILING
- MIRRORED WARDROBE DOORS
- NEUTRAL COLOR PALETTE
- PRIVATE PATIOS OR BALCONIES
- WOOD-BURNING FIREPLACE IN SELECTED UNITS

COSTAVERDEVILLAGE.COM



THE SEA BREEZE

2 Bedrooms
2 bath
1,148 sq.ft.



The developer reserves the right to modify floor plans, specifications, features, and product types and brands without notice or obligation. Monthly rental rates are subject to change at any time, all square footage, dimensions, positions, locations, and details are approximate. This floor plan is for illustration purposes only.

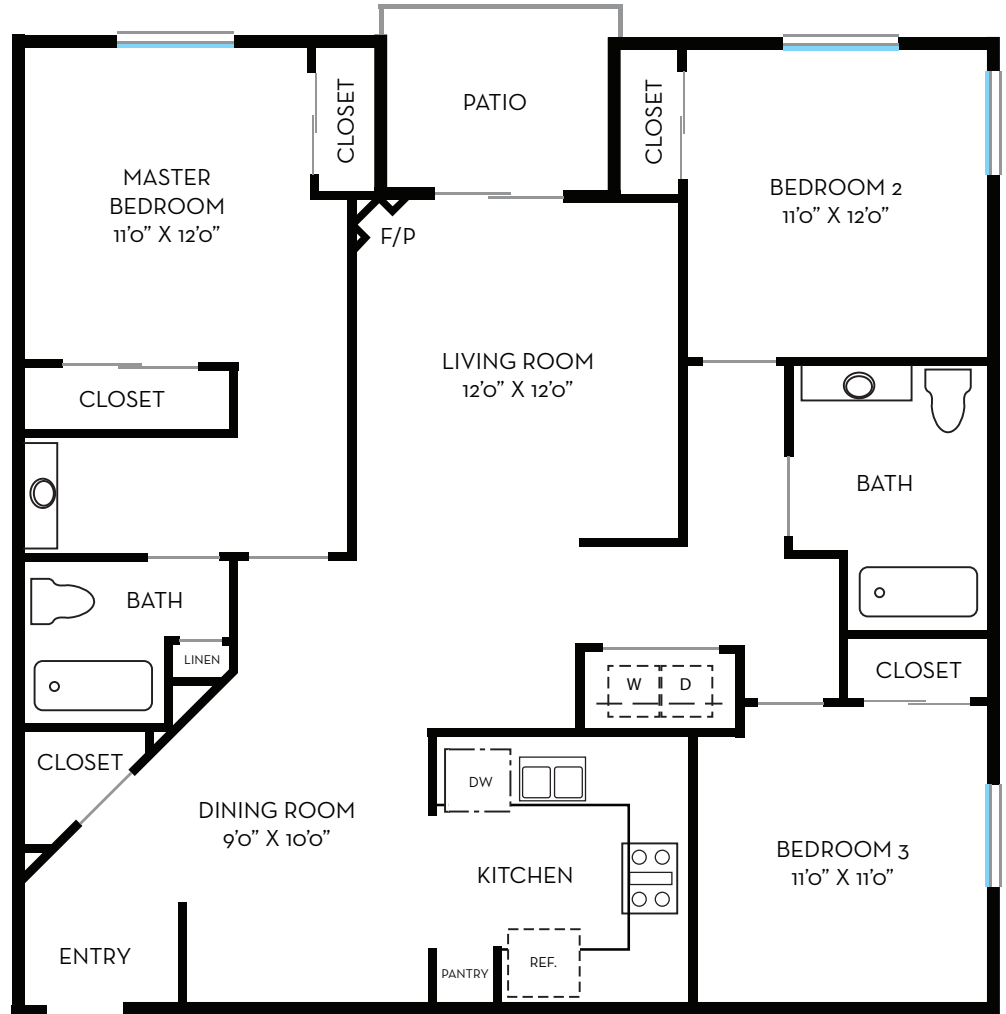
THREE BEDROOM FLOORPLAN



COSTA VERDE VILLAGE

- PRIVATE PATIOS
- PICNIC & BBQ AREAS
- POOLS & SPAS
- BUSINESS CENTER
- CHILDREN'S PLAY AREA
- FREE RESIDENT SHUTTLE
- MOVIE THEATRE
- CONTROLLED CENTRAL AIR & HEAT
- FULL-SIZE WASHER AND DRYER
- GENEROUS CLOSET, LINEN & STORAGE SPACE
- ICEMAKERS IN SELECT UNITS
- KITCHEN PANTRIES
- LOFTS / VAULTED CEILING
- MIRRORED WARDROBE DOORS
- NEUTRAL COLOR PALETTE
- PRIVATE PATIOS OR BALCONIES
- WOOD-BURNING FIREPLACE IN SELECTED UNITS

COSTAVERDEVILLAGE.COM



THE VENTURA

3 Bedrooms

2 bath

1,267 sq.ft.

Fireplaces in select units



COSTA VERDE VILLAGE

- PRIVATE PATIOS
- PICNIC & BBQ AREAS
- POOLS & SPAS
- BUSINESS CENTER
- CHILDREN'S PLAY AREA
- FREE RESIDENT SHUTTLE
- MOVIE THEATRE
- CONTROLLED CENTRAL AIR & HEAT
- FULL-SIZE WASHER AND DRYER
- GENEROUS CLOSET, LINEN & STORAGE SPACE
- ICEMAKERS IN SELECT UNITS
- KITCHEN PANTRIES
- LOFTS / VAULTED CEILING
- MIRRORED WARDROBE DOORS
- NEUTRAL COLOR PALETTE
- PRIVATE PATIOS OR BALCONIES
- WOOD-BURNING FIREPLACE IN SELECTED UNITS

COSTAVERDEVILLAGE.COM



The developer reserves the right to modify floor plans, specifications, features, and product types and brands without notice or obligation. Monthly rental rates are subject to change at any time, all square footage, dimensions, positions, locations, and details are approximate. This floor plan is for illustration purposes only.