



CASA MIRA VIEW

9800 MIRA LEE WAY • SAN DIEGO, CA 92126 • (888) 790-3934

www.CasaMiraView.com

Another Quality Development By  GARDEN COMMUNITIES   



DAY TO NIGHT SOPHISTICATION IS YOURS

The amenities at Casa Mira View fulfill the day to night promise of complete luxury and enjoyment. Discover the resort-style pools & spas, High Voltage Fitness Center, scenic rooftop spa deck retreat, bowling alley, tech lounge, billiards and much more. Living in San Diego has its definite perks. Have your choice of abundant outdoor recreation, beaches and trails, upscale shopping & gourmet dining downtown, as well as a tremendous appreciation for the arts. See life in all of its beautiful hues when you live at Casa Mira View.

EXPERIENCE ALL OF THE
INCREDIBLY SPACIOUS
CASA MIRA VIEW 1, 2 & 3
BEDROOM APARTMENT
HOMES FOR RENT IN SAN
DIEGO THAT ARE A CUT
ABOVE WITH IMPRESSIVE
DESIGNER FINISHES.

EXPERIENCE THE BEST OF SAN DIEGO



CASA MIRA VIEW'S
LOCATION IS IDEALLY
SITUATED IN THE SCRIPPS
CORRIDOR – WITH EASY
ACCESS TO I-15, YOU
WON'T NEED TO TRAVEL
FAR TO EXPERIENCE
EVERYTHING SAN DIEGO
HAS TO OFFER!

Life at Casa Mira View is endlessly scenic and relaxing. The area is abundant with trails and parks. Enjoy year-round perfect weather, scenic recreation and the wonders of nature at Lake Miramar, Los Penasquitos Canyon Preserve, Black Mountain Open Space Park, Rose Canyon Open Space Park, and Miner's Ridge Loop Trail. Play ball, have a picnic, or relax at one of the many nearby parks including Polaris Breen Park, Hourglass Community Park or Camino Ruiz Neighborhood Park. Refine your golf game at Carmel Mountain Ranch Golf Club, Miramar Memorial Golf Course, The Grand Golf Club, or Sorrento Canyon Golf Center. Pick up something fresh to make for dinner at Trader Joe's, Albertsons, H-Mart, Vons, Seafood City, Mira Mesa Farmers Market, or Scripps Ranch Farmers Market. Catch the latest movies at Edwards Mira Mesa. Expand your intellectual horizons at nearby San Diego Miramar College, Central Texas College, or California College San Diego. Downtown San Diego, La Jolla, and Torrey Pines are only a short drive away. You're invited to explore this incredible area with us.



COMMUNITY AMENITIES

- *Grand* Resort Pool & Spa
- *Riviera* Resort Saltwater Pools & Spa
- *FIDUS* Pet Concierge: Dog walking, pet sitting, dog & cat grooming, pet food/ supplies, & pet transport for *FIDUS* grooming or veterinary appointments.
- *Pacifica* Rooftop Spa Deck Retreat
- *Aqua* Resort Pool
- *Laguna* Resort Pool
- Lap Pool
- Outdoor Chess & Ping-Pong
- Playground
- *High Voltage* Fitness Center
- *Kingpin* Bowling Alley & Lounge
- *The Hub* Entertainment Lounge
- *The Cloud* Tech Lounge
- *Board Room* Conference Room
- Community Clubhouse
- *Soapbox* Dry Cleaners
- *Studio V* Hair Salon
- Green/solar common areas
- Courtesy resident shuttle
- Indoor play area
- Billiards
- Art sculptures
- Architecturally unique building styles
- In proximity to stores, restaurants, entertainment & shopping
- 24-hour maintenance dispatch service
- Courtesy patrol and parking monitoring
- Electric car charging stations
- Additional storage units available
- Pet permitted with additional deposit in select units
- Professional management office - open daily
- Easy Access to I-15



WE PROUDLY OFFER
A NON-SMOKING
COMMUNITY



THE VILLAS

AT CASA MIRA VIEW



9800 Mira Lee Way, San Diego, CA 92126

(888) 347-7061

www.casamiraview.com





THE VILLAS AT CASA MIRA VIEW ARE THE NEWEST RELEASE OF RESIDENCES IN THE CASA MIRA VIEW COMMUNITY. THE VILLAS ARE COMPRISED OF 228 NEW AND EXCLUSIVE APARTMENT HOMES OFFERING AN ARRAY OF DISTINCTIVE AMENITIES AND DESIGNER FINISHES.

The Villas at Casa Mira View offer spacious, open floor plans, ranging in square footage from 926 up to an expansive 1,840. Inside each Villa apartment, residents will discover many new features and upgraded interiors such as, beautifully tiled bathrooms, luxury vinyl plank flooring, and spacious, walk-in closets. Residents will enjoy hosting in their chef's kitchen, complete with stylish pendant lighting, a large island with seating for your guests, high-end stainless steel appliances, and ample quartz counter space. Other features include a large washer and dryer, individually climate controlled residences, an ample amount of storage, and balcony spaces perfect for entertaining. Pets are welcomed in select homes.

- **CENTRAL BARK** DOG PARK
 - **REBOUND** FULL-SIZE BASKETBALL COURT
 - **THE GREEN** MULTI-PURPOSE TURF AREA
 - SNOOKBALL COURT
 - ART SCULPTURES IN COURTYARDS
 - BOCCE BALL
 - PARCEL LOCKERS
- **CASCADA** SALTWATER POOL
 - ~ DJ Tower
 - ~ Terraced Pool Area
 - ~ Cabanas on Second Level
 - ~ **SPLASH PAD** Water Play Area
 - ~ BBQ Counter and Entertainment Space
 - ~ Showers





THE RESERVE

AT CASA MIRA VIEW



9800 Mira Lee Way, San Diego, CA 92126

(888) 347-7061

www.casamiraview.com



THE RESERVE AT CASA MIRA VIEW IS THE HIGHLY ANTICIPATED, PHASE IV OF THE CASA MIRA VIEW COMMUNITY. THEY ARE COMPRISED OF 319 NEW AND EXCLUSIVE ONE, TWO AND THREE BEDROOM APARTMENT HOMES OFFERING AN ARRAY OF DESIGNER FINISHES AND DISTINCTIVE AMENITIES EXCLUSIVE TO RESIDENTS OF *THE RESERVE*.

Future luxury amenities will include the rooftop pool and spa equipped with private cabanas, a turf game area, a clubhouse and entertaining space with barbecues, and TV's all for the exclusive use of The Reserve residents. The Reserve at Casa Mira View will offer spacious, open floor plans, ranging in square footage from 821 up to an expansive 1,517.

Inside each Reserve apartment, residents will discover many new features and upgraded interiors such as, quartz countertops, luxury vinyl plank flooring, and spacious, walk-in closets. Stunning kitchens are fully equipped with quartz countertops and an upgraded appliance package including a refrigerator with ice maker, microwave, dishwasher, disposal, and range. Other features include a large washer and dryer, an ample amount of storage, and balcony spaces perfect for entertaining. Pets are welcomed in select homes.

AMENITIES EXCLUSIVE TO THE RESERVE RESIDENTS ONLY:

- Rooftop Pool & Spa with Private Cabanas
- Turf Game Area
- Clubhouse & Entertaining Space with Barbecues & TV's

INTERIOR FEATURES:

- Washer & Dryer in Each Unit
- Upgraded Appliance Package Including Refrigerator With Ice Maker, Microwave, Dishwasher, Disposal, and Range
- Quartz Countertops
- Vinyl Plank Flooring in Selected Areas
- Upgraded Carpeting
- Central Heating and Air Conditioning
- Neutral Color Palette
- Controlled Access Parking
- Expansive Patios or Balconies Available with Storage in Select Units
- Generous Closet, Linen, and Storage Space
- Pet permitted with additional deposit in select units

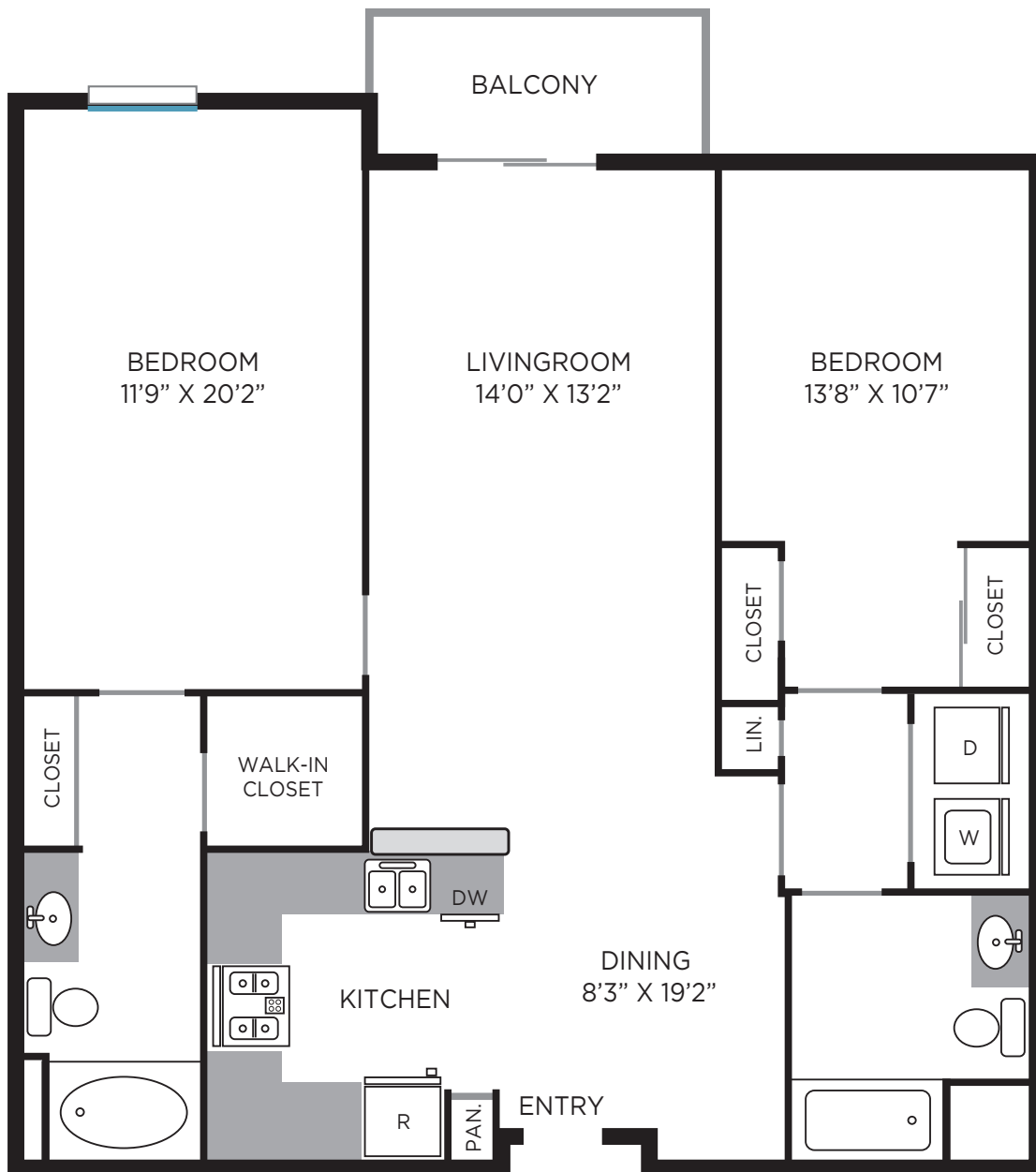
Siena

PLAN 2A

- Two bedroom floor plan
- Two bath
- Phase I 1,272 sq. ft.
- Phase II 1,310 sq. ft.

Siena is a rustic city, renowned for its glorious castles and medieval structures, making it a favorite Italian destination. The Siena floor plan is perfect for entertaining guests of your own, with a roomy layout and comfortable arrangement, this artfully designed home can be your own personal castle.

The developer reserves the right to modify floor plans, specifications, features, and product types and brands without notice or obligation. Monthly rental rates are subject to change at any time, all square footage, dimensions, positions, locations, and details are approximate.





Ventura

PLAN 3A

*Ventura is Italian for "fortune".
This generously designed home will
surround you with the luxuries and good
fortunes of Italy.*

- Three bedroom floor plan
- Two bath
- Phase I 1,461 sq. ft.
- Phase II 1,496 sq. ft.

The developer reserves the right to modify floor plans, specifications, features, and product types and brands without notice or obligation. Monthly rental rates are subject to change at any time, all square footage, dimensions, positions, locations, and details are approximate.



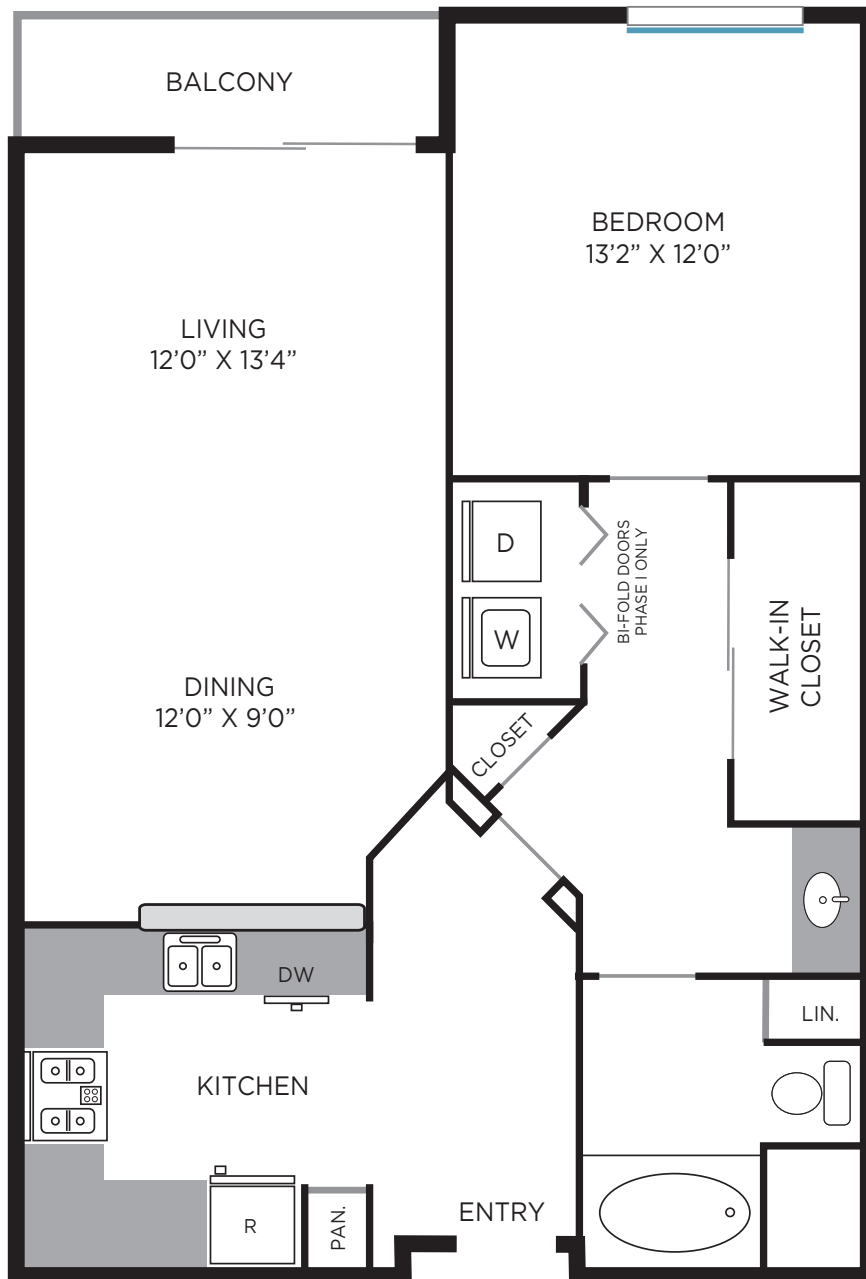
Panzano

PLAN 1A

- One bedroom floor plan
- One bath
- Phase I 876 sq. ft.
- Phase II 912 sq. ft.

Panzano is a quaint, beautiful Italian holiday destination, perfect for relaxing and unwinding. The Panzano floor plan is a great place to unwind and relax, offering the escape you need in the comfort of your own home.

The developer reserves the right to modify floor plans, specifications, features, and product types and brands without notice or obligation. Monthly rental rates are subject to change at any time, all square footage, dimensions, positions, locations, and details are approximate.





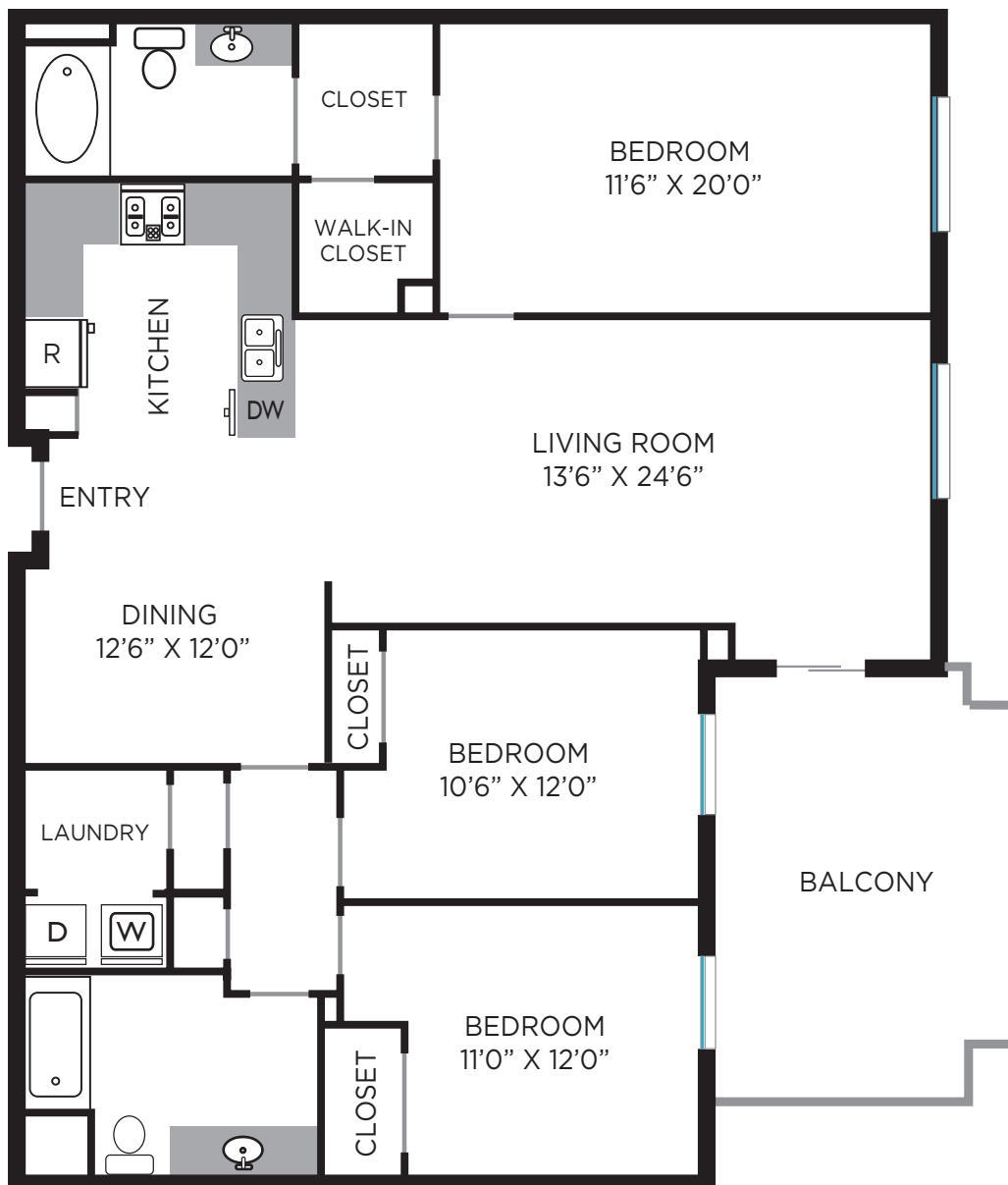
Messina

PLAN 3B

- Three bedroom floor plan
- Two bath
- Phase I 1,545 sq. ft.
- Phase II 1,571 sq. ft.

Messina is known as the “door to Sicily” with its great architecture. The Messina floor plan is large and spacious, great for entertaining guests for dinner or having family stay over while still having enough space and privacy. This unique architecturally designed home can be your door to great living.

The developer reserves the right to modify floor plans, specifications, features, and product types and brands without notice or obligation. Monthly rental rates are subject to change at any time, all square footage, dimensions, positions, locations, and details are approximate.





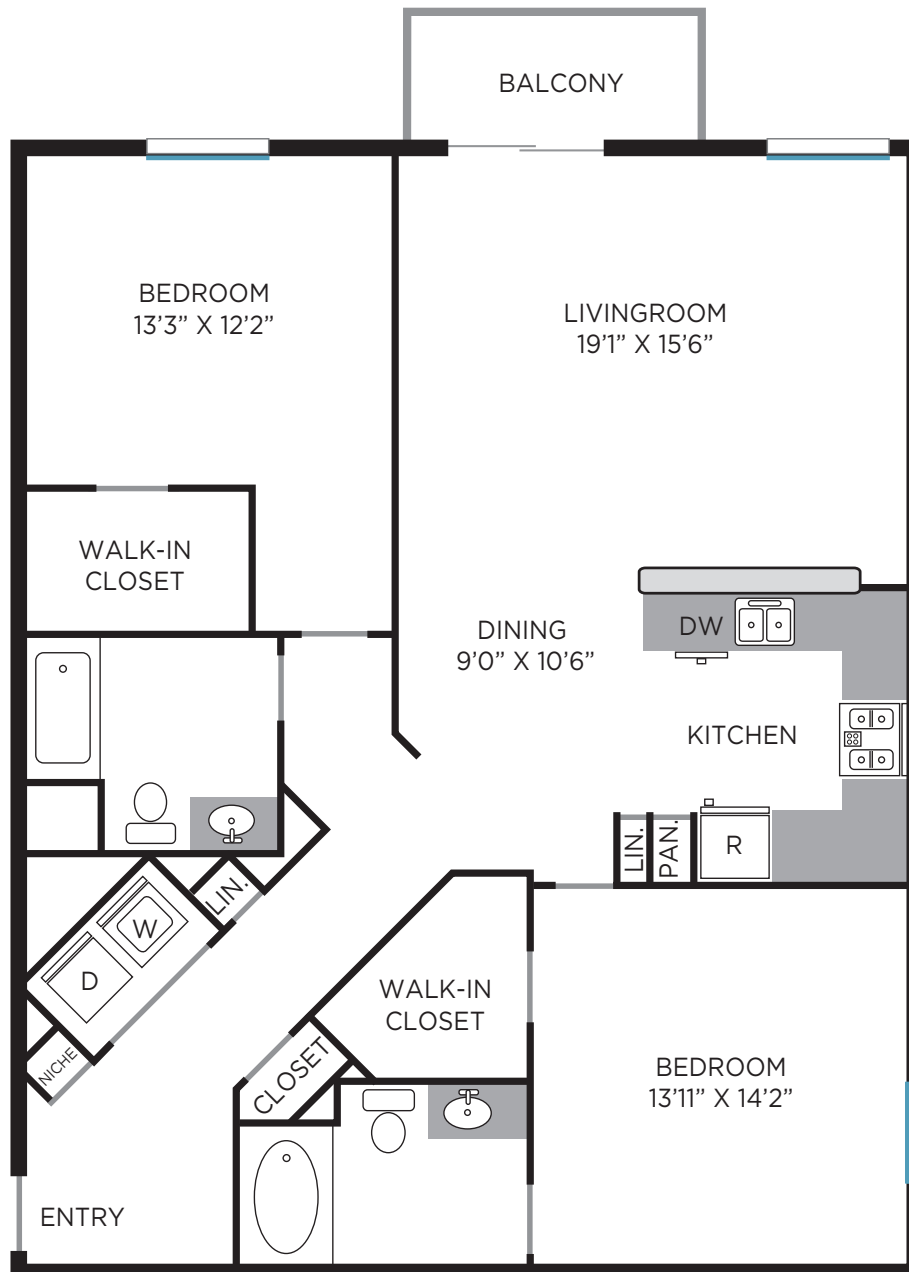
Firenze

PLAN 2B

- Two bedroom floor plan
- Two bath
- Phase I 1,391 sq. ft.
- Phase II 1,391 sq. ft.

Florence is the birthplace of the Italian Renaissance, a central hub for masterpieces of art and the rebirth of European civilization. The Firenze floor plan is the rebirth of the 2 bedroom floor plan, creating the ultimate central hub in a spacious layout, it is a masterpiece all of its own.

The developer reserves the right to modify floor plans, specifications, features, and product types and brands without notice or obligation. Monthly rental rates are subject to change at any time, all square footage, dimensions, positions, locations, and details are approximate.





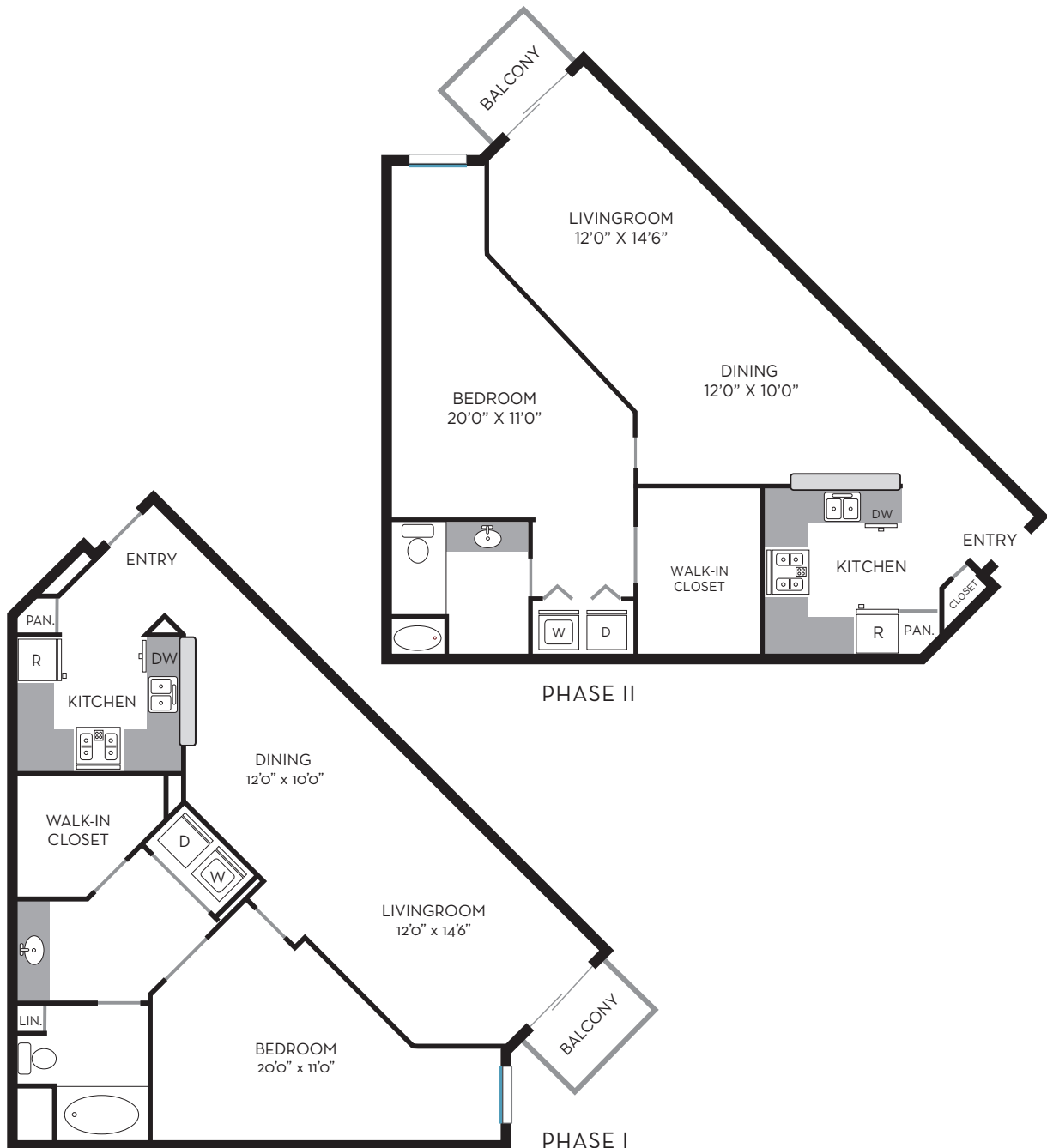
Chianti

PLAN 1B

- One bedroom floor plan
- One bath
- Phase I 970 sq. ft.
- Phase II 969 sq. ft.

The Chianti region is known for sleepy rolling hills and vineyards, providing a Tuscan dreamscape for visitors. You won't need to travel to Tuscany to experience its comforts in the Chianti floor plan, a comfortable living space that you can customize into your own personal dreamscape.

The developer reserves the right to modify floor plans, specifications, features, and product types and brands without notice or obligation. Monthly rental rates are subject to change at any time, all square footage, dimensions, positions, locations, and details are approximate.



Cabrillo

PLAN 2C

- Two bedroom floor plan
- Two bath
- Phase I 1,242 sq. ft.
- Phase II 1,230 sq. ft.

Named for the famous explorer, the Cabrillo floor plan gives you plenty of room for your family and friends to explore this spacious home. The Cabrillo is a perfect example for discovering what you can do with entertaining or just relaxing in spacious elegance

The developer reserves the right to modify floor plans, specifications, features, and product types and brands without notice or obligation. Monthly rental rates are subject to change at any time, all square footage, dimensions, positions, locations, and details are approximate.





AMENITIES

- **CENTRAL BARK** DOG PARK
- **REBOUND** FULL-SIZE BASKETBALL COURT
- **THE GREEN** MULTI-PURPOSE TURF AREA
- SNOOKBALL COURT
- ART SCULPTURES IN COURTYARDS
- BOCCE BALL
- PARCEL LOCKERS
- **CASCADE** SALTWATER POOL
 - ~ DJ Tower
 - ~ Terraced Pool Area
 - ~ Cabanas on Second Level
 - ~ **SPLASH PAD** Water Play Area
 - ~ BBQ Counter and Entertainment Space
 - ~ Showers

STELLATO

1 BED/1 BATH
922-926 SQ.FT



THE VILLAS
AT CASA MIRA VIEW

The developer reserves the right to modify floor plans, specifications, features, and product types and brands without notice or obligation. Monthly rental rates are subject to change at any time, all square footage, dimensions, positions, locations, and details are approximate. Amenities subject to change without prior notice.

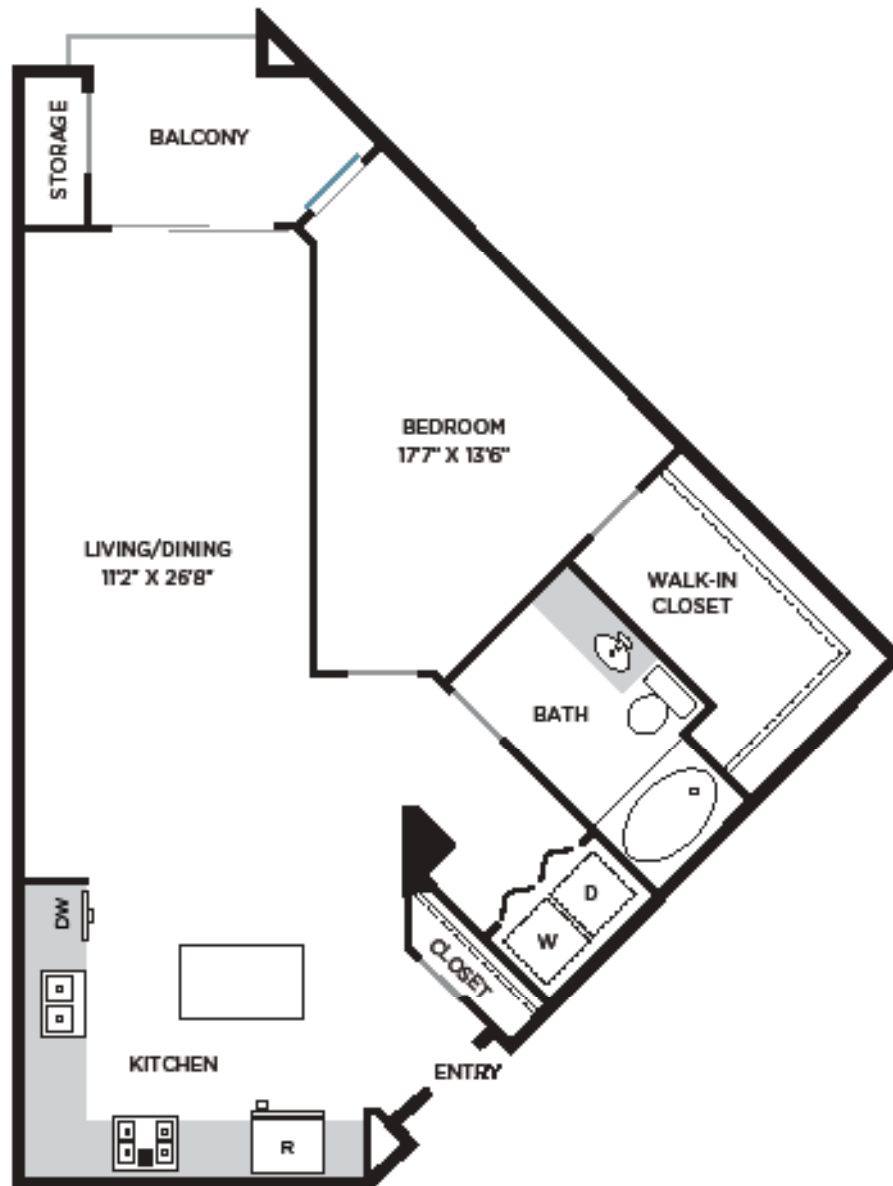


AMENITIES

- **CENTRAL BARK** DOG PARK
- **REBOUND** FULL-SIZE BASKETBALL COURT
- **THE GREEN** MULTI-PURPOSE TURF AREA
- SNOOKBALL COURT
- ART SCULPTURES IN COURTYARDS
- BOCCE BALL
- PARCEL LOCKERS
- **CASCADEA** SALTWATER POOL
 - ~ DJ Tower
 - ~ Terraced Pool Area
 - ~ Cabanas on Second Level
 - ~ **SPLASH PAD** Water Play Area
 - ~ BBQ Counter and Entertainment Space
 - ~ Showers

TOSCANA

1 BED/1 BATH
1,104 SQ.FT



THE VILLAS
AT CASA MIRA VIEW

The developer reserves the right to modify floor plans, specifications, features, and product types and brands without notice or obligation. Monthly rental rates are subject to change at any time, all square footage, dimensions, positions, locations, and details are approximate. Amenities subject to change without prior notice.

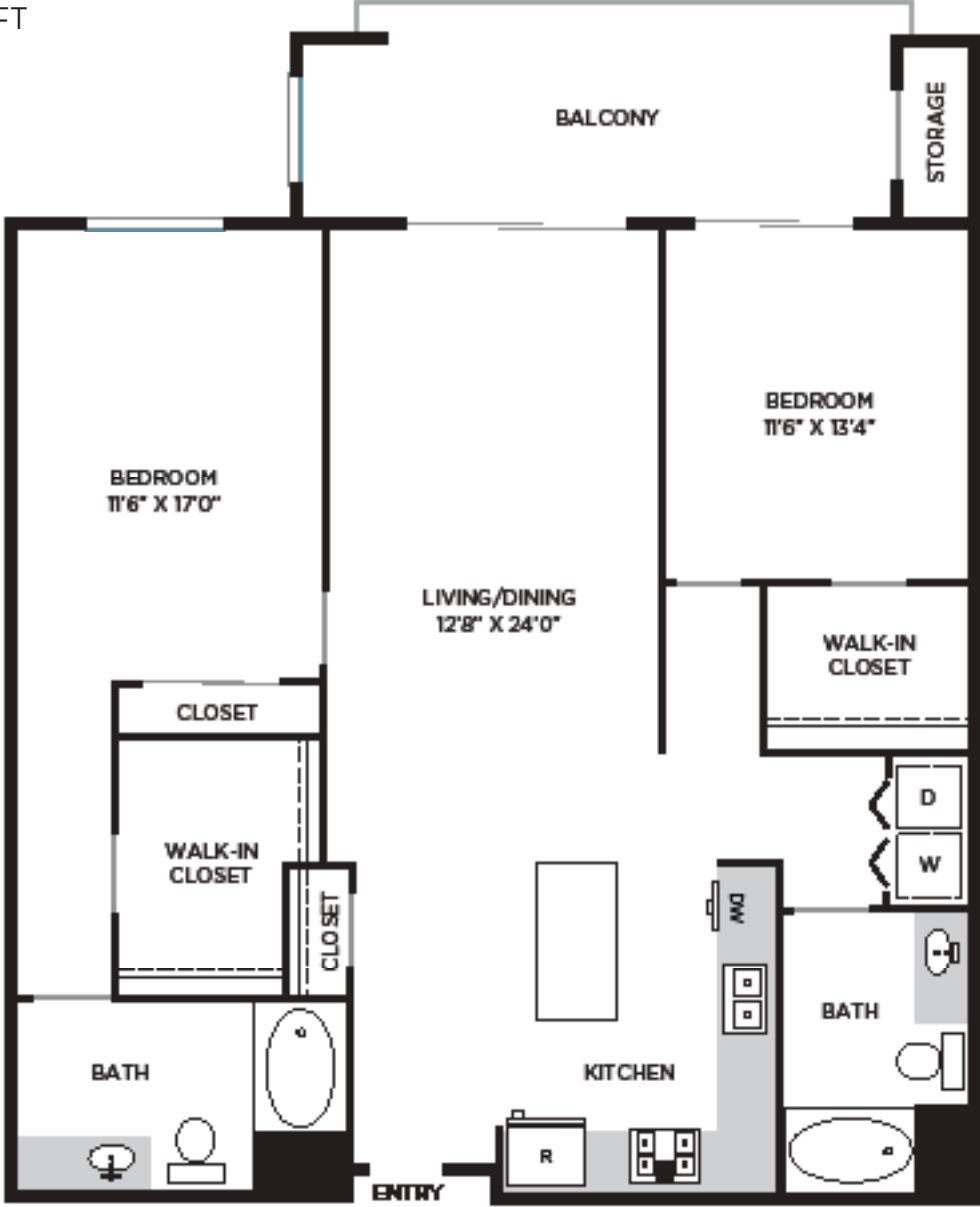


AMENITIES

- **CENTRAL BARK** DOG PARK
- **REBOUND** FULL-SIZE BASKETBALL COURT
- **THE GREEN** MULTI-PURPOSE TURF AREA
- SNOOKBALL COURT
- ART SCULPTURES IN COURTYARDS
- BOCCE BALL
- PARCEL LOCKERS
- **CASCADE** SALTWATER POOL
 - ~ DJ Tower
 - ~ Terraced Pool Area
 - ~ Cabanas on Second Level
 - ~ **SPLASH PAD** Water Play Area
 - ~ BBQ Counter and Entertainment Space
 - ~ Showers

TESORO

2 BED/2 BATH
1,384-1,398 SQ.FT



THE VILLAS
AT CASA MIRA VIEW

The developer reserves the right to modify floor plans, specifications, features, and product types and brands without notice or obligation. Monthly rental rates are subject to change at any time, all square footage, dimensions, positions, locations, and details are approximate. Amenities subject to change without prior notice.

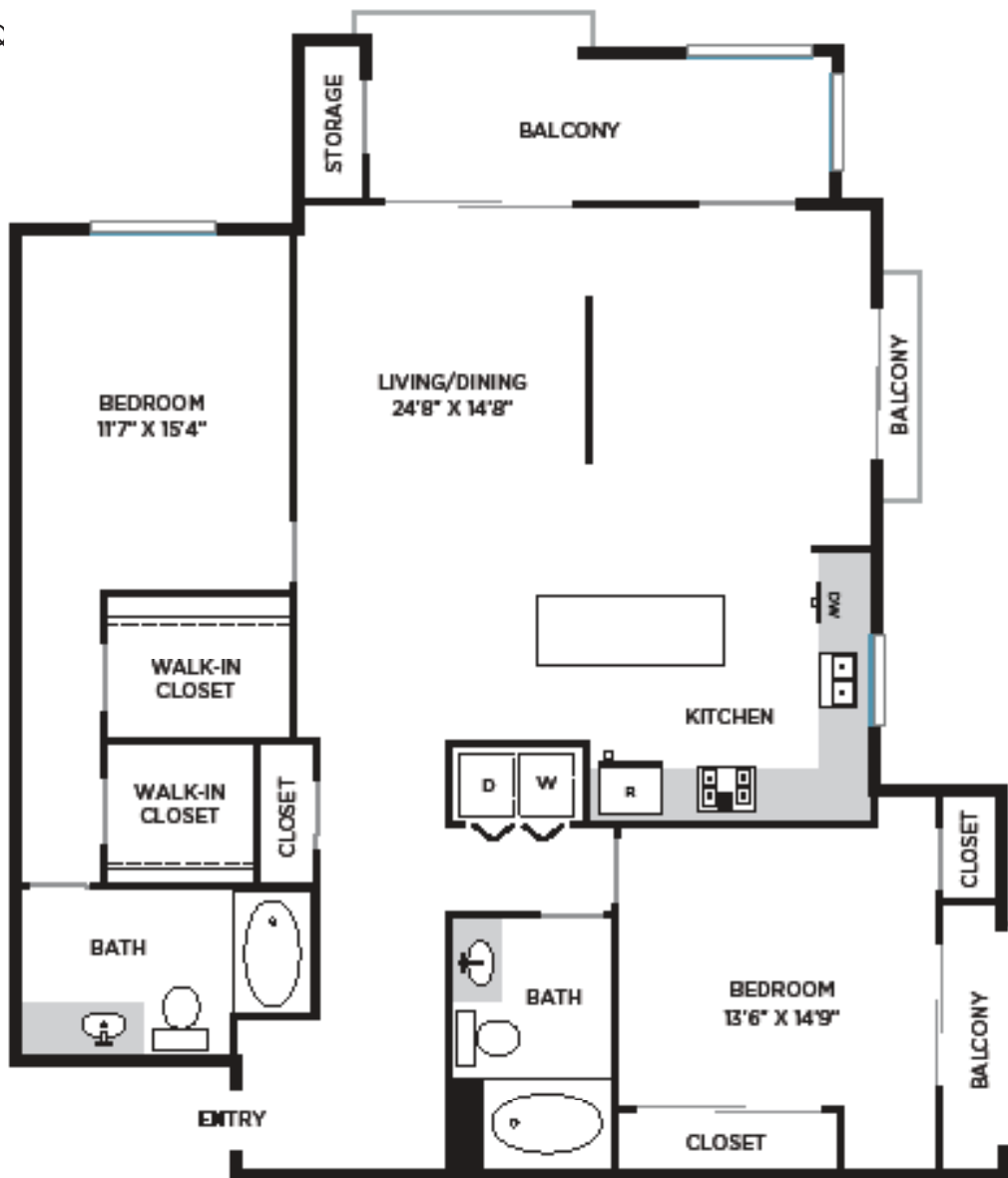


AMENITIES

- **CENTRAL BARK** DOG PARK
- **REBOUND** FULL-SIZE BASKETBALL COURT
- **THE GREEN** MULTI-PURPOSE TURF AREA
- SNOOKBALL COURT
- ART SCULPTURES IN COURTYARDS
- BOCCE BALL
- PARCEL LOCKERS
- **CASCADE** SALTWATER POOL
 - ~ DJ Tower
 - ~ Terraced Pool Area
 - ~ Cabanas on Second Level
 - ~ **SPLASH PAD** Water Play Area
 - ~ BBQ Counter and Entertainment Space
 - ~ Showers

PALAZZO

2 BED/2 BATH
1,526-1,556 SQ



THE VILLAS
AT CASA MIRA VIEW

The developer reserves the right to modify floor plans, specifications, features, and product types and brands without notice or obligation. Monthly rental rates are subject to change at any time, all square footage, dimensions, positions, locations, and details are approximate. Amenities subject to change without prior notice.



AMENITIES

- **CENTRAL BARK** DOG PARK
- **REBOUND** FULL-SIZE BASKETBALL COURT
- **THE GREEN** MULTI-PURPOSE TURF AREA
- SNOOKBALL COURT
- ART SCULPTURES IN COURTYARDS
- BOCCE BALL
- PARCEL LOCKERS
- **CASCADA** SALTWATER POOL
 - ~ DJ Tower
 - ~ Terraced Pool Area
 - ~ Cabanas on Second Level
 - ~ **SPLASH PAD** Water Play Area
 - ~ BBQ Counter and Entertainment Space
 - ~ Showers

CONTESSA

3 BED/2 BATH
1,773-1,840 SQ.FT



THE VILLAS
AT CASA MIRA VIEW

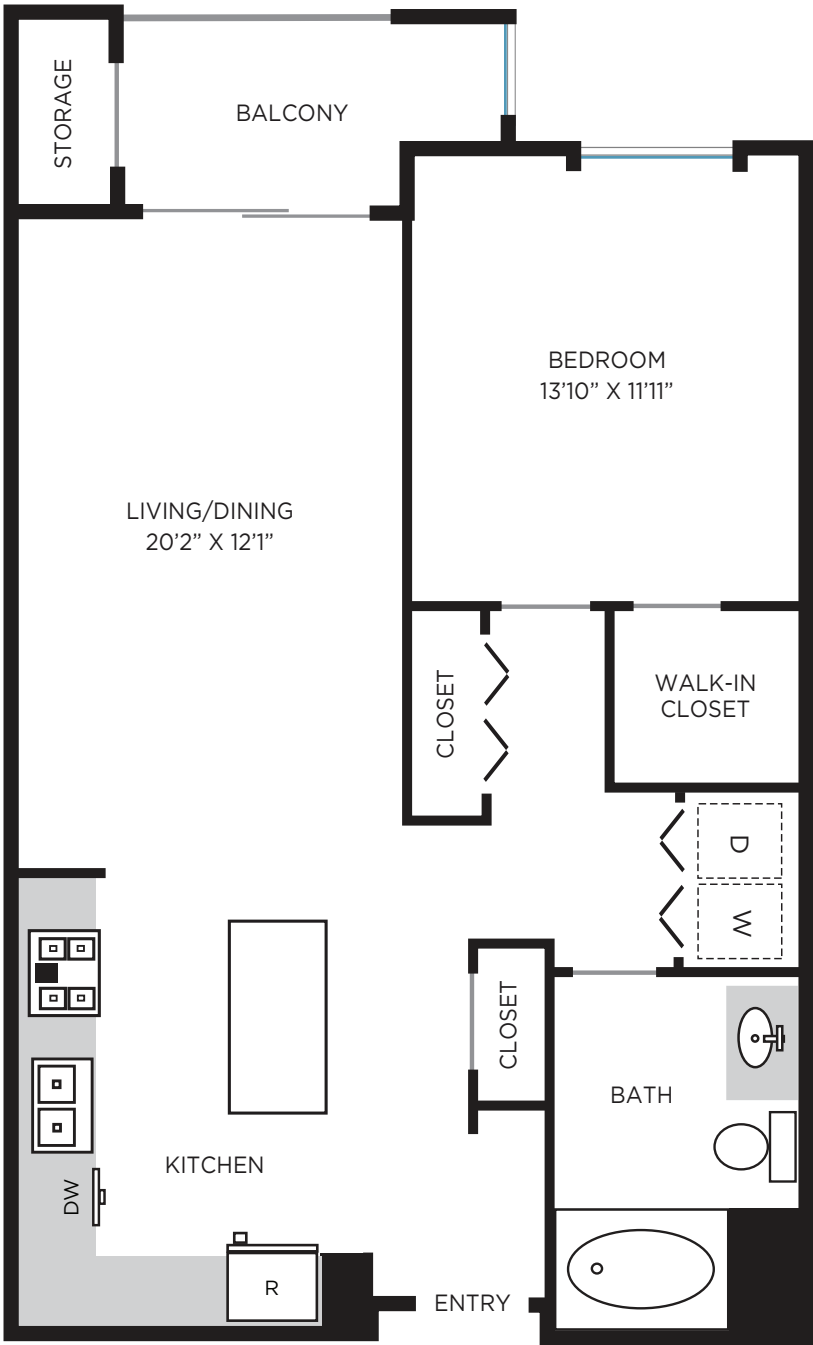
The developer reserves the right to modify floor plans, specifications, features, and product types and brands without notice or obligation. Monthly rental rates are subject to change at any time, all square footage, dimensions, positions, locations, and details are approximate. Amenities subject to change without prior notice.

1A

1 BED

1 BATH

821-933 SQ.FT



All dimensions, positions, locations and details are approximate. Layout and balconies vary by floor.

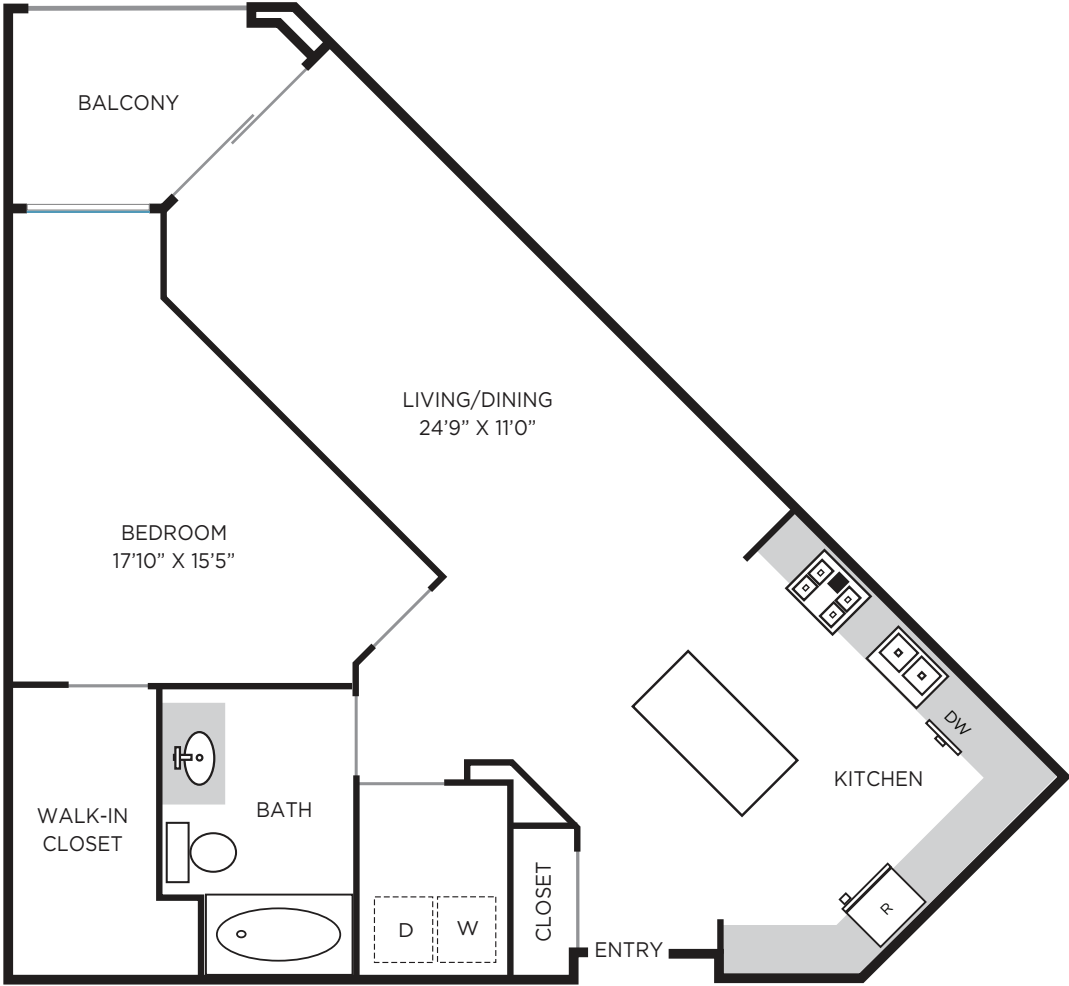


1B

1 BED

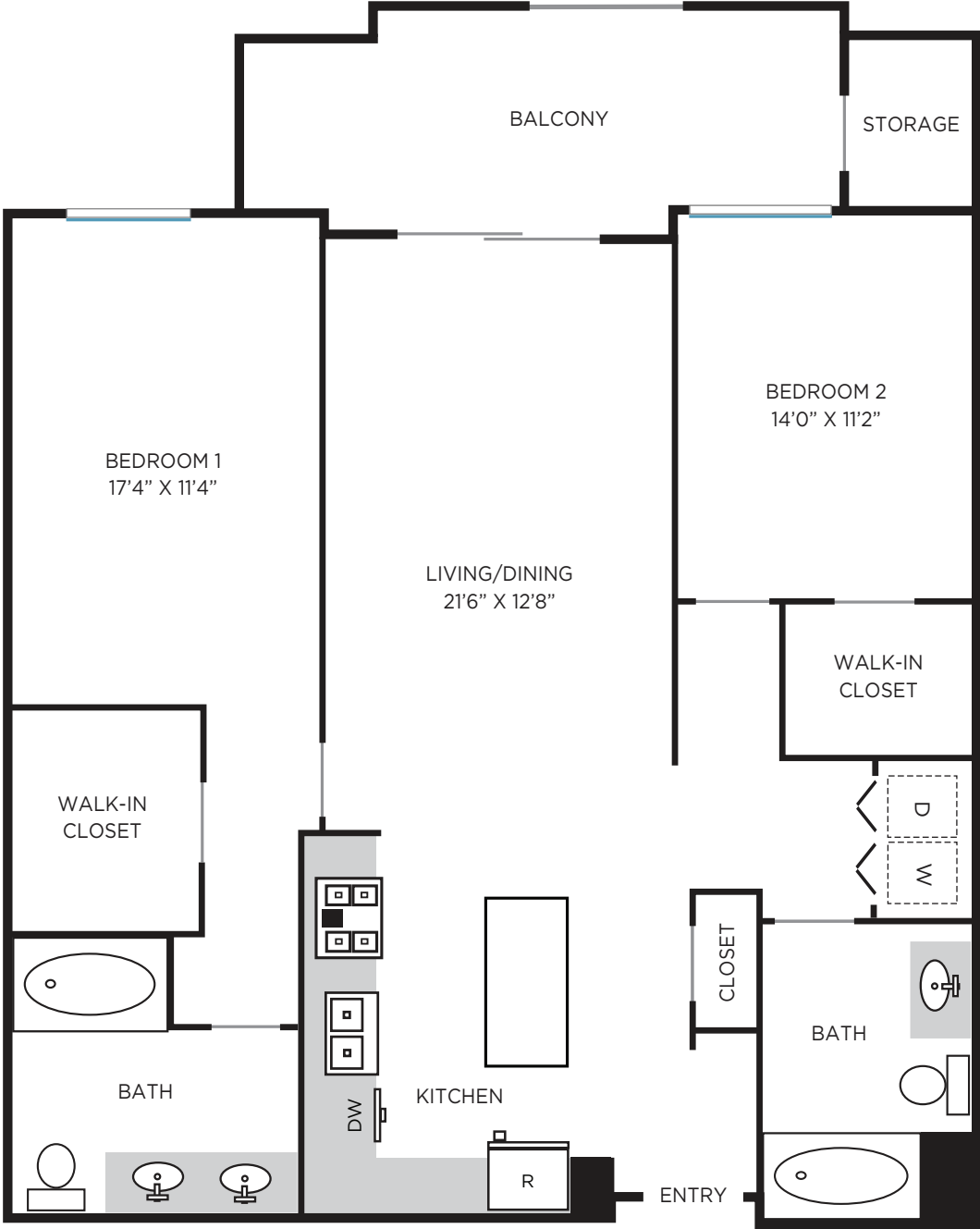
1 BATH

919-940 SQ.FT



2A

2 BED
2 BATH
1,164-1,237
SQ.FT



All dimensions, positions, locations and details are approximate. Layout and balconies vary by floor.



2B

2 BED

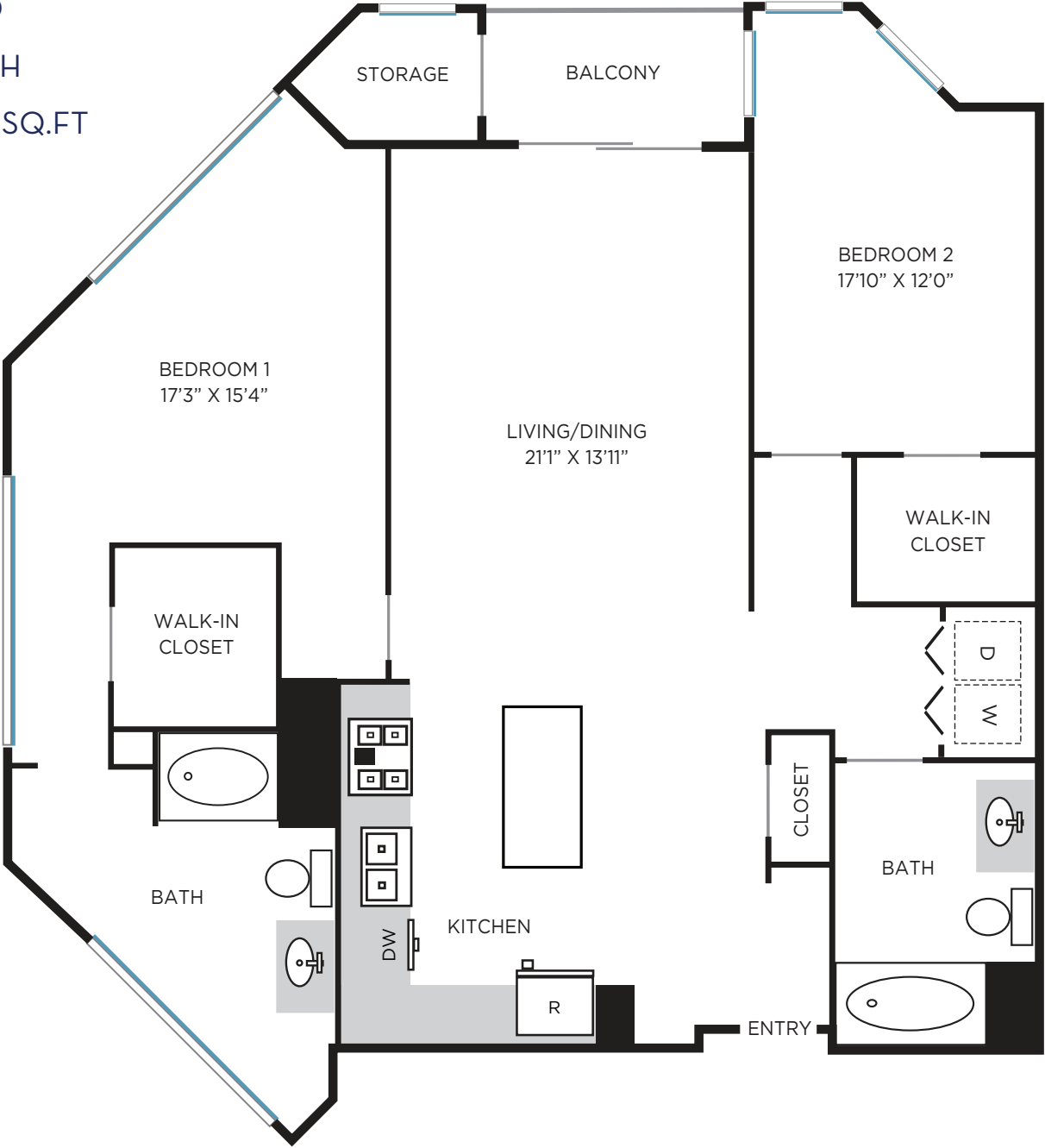
2 BATH

1,219 SQ.FT



2C

2 BED
2 BATH
1,407 SQ.FT



All dimensions, positions, locations and details are approximate. Layout and balconies vary by floor.



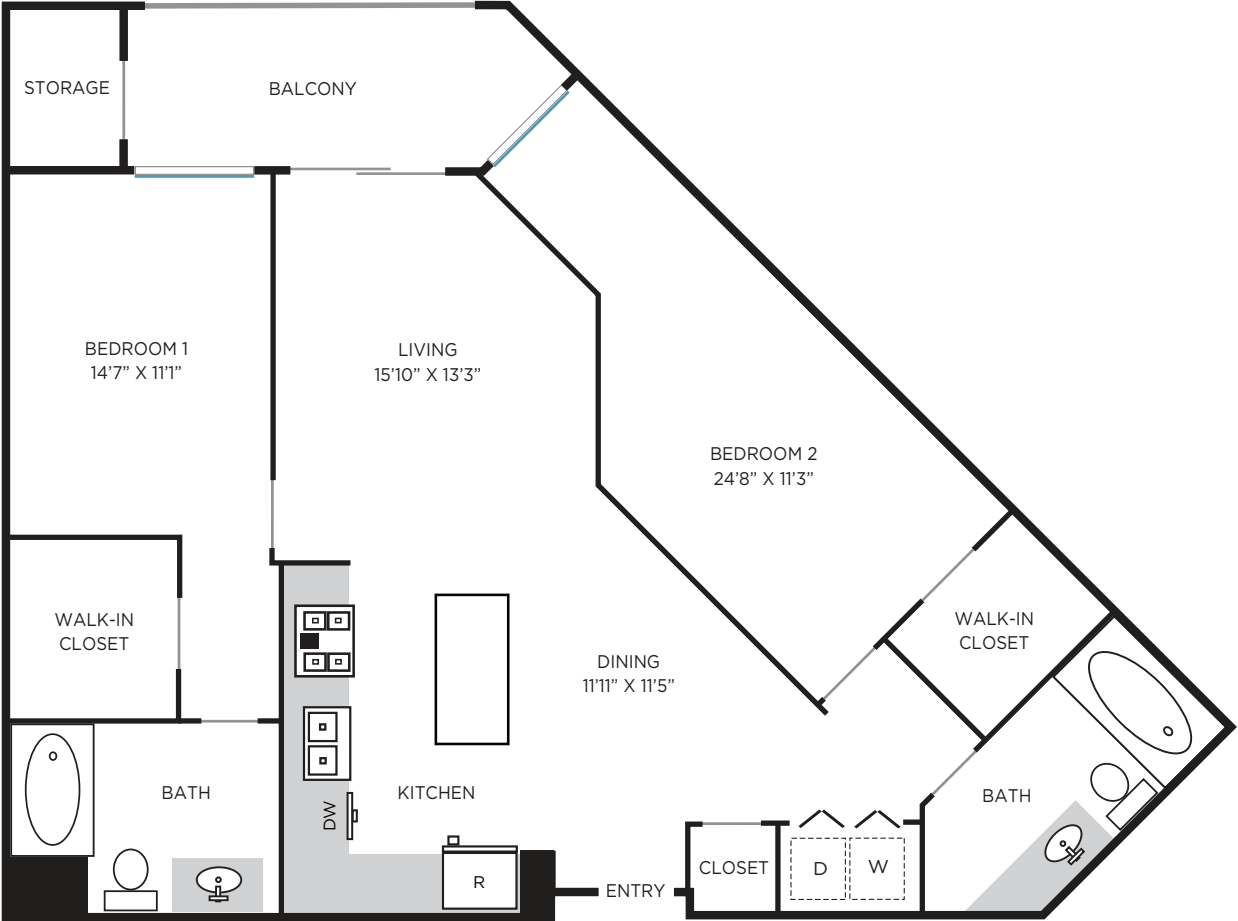
2D

2 BED

2 BATH

1,181-1,236

SQ.FT



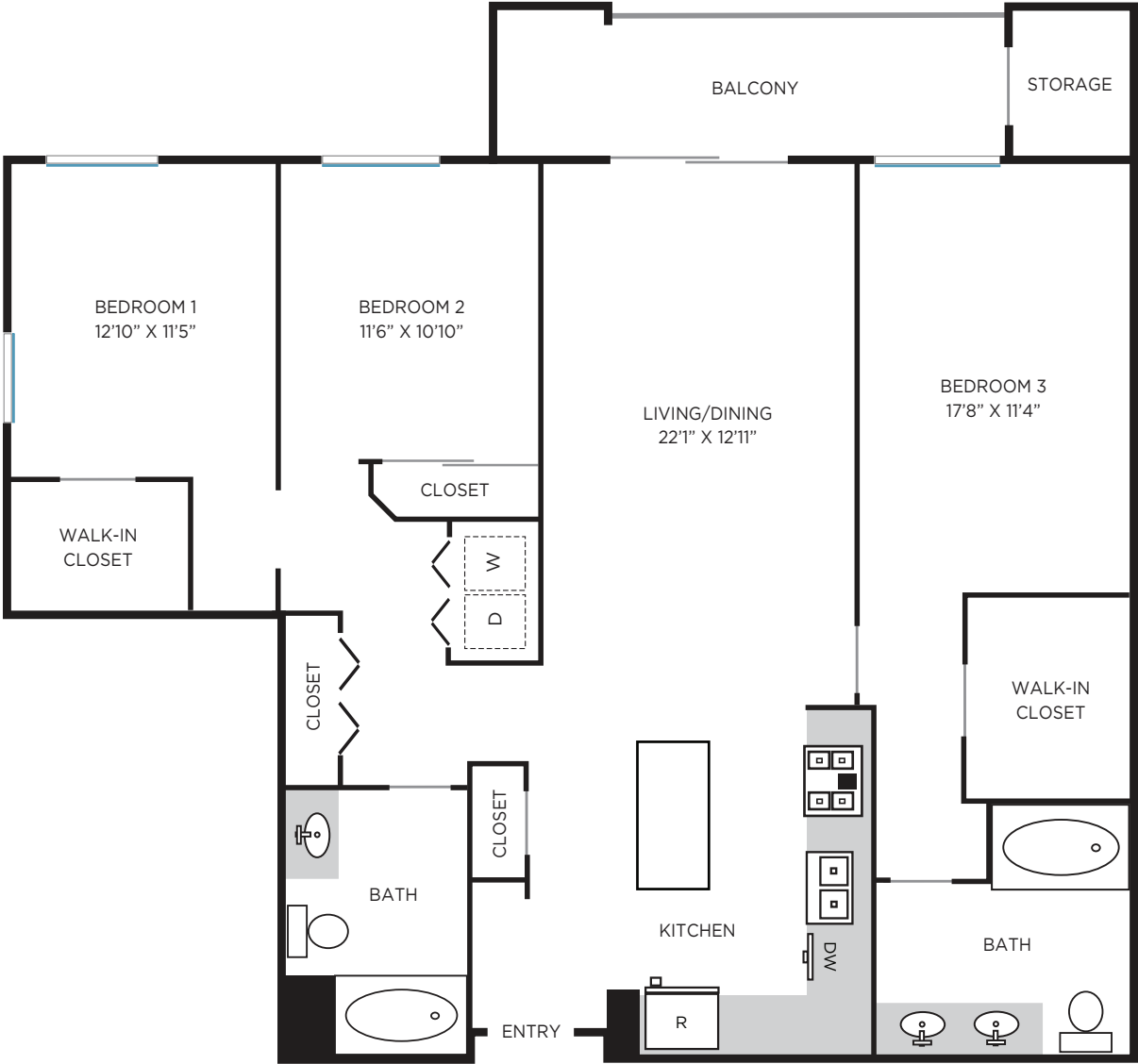
3A

3 BED

2 BATH

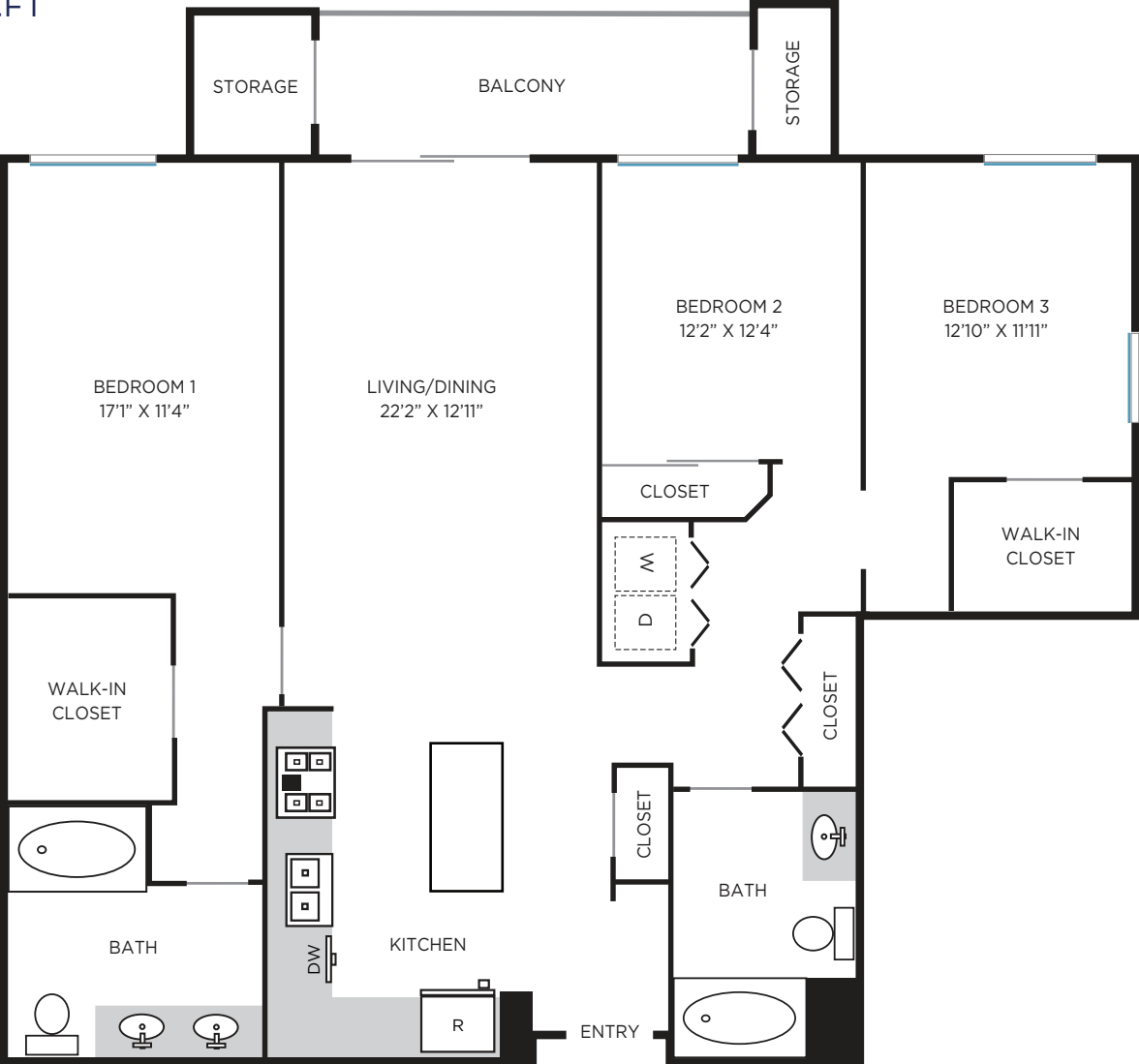
1,446-1,512

SQ.FT



3B

3 BED
2 BATH
1,517 SQ.FT



All dimensions, positions, locations and details are approximate. Layout and balconies vary by floor.

