

TOWERS *at* Costa Verde



THE TOWERS AT COSTA VERDE, FOR THOSE WITH HIGHER ASPIRATIONS.

With sweeping views of the La Jolla Coastline, San Diego's majestic mountains and the bustling urban excitement of the Golden Triangle, the Towers at Costa Verde is the preeminent living environment for those with exceptional taste. The sophisticated living spaces include studios, 1, 2, and 3 bedroom condominium homes with open floor plans, natural lighting and a multitude of decorating options.





COMMUNITY FEATURES

Resort-Style Heated Pool

Private Poolside Cabanas

Controlled Access Entry

Subterranean Parking

Nook - Library

Driving Range

Putting Green

Basketball Court

2 Lighted Tennis Courts

Fitness Center

Hydrotherapy Whirlpool Spa

Club Room with Gourmet Kitchen

Unique, Complimentary Resident Events

AQUA BELLA FEATURES

Complimentary Fitness Classes

Personal Training



GOURMET KITCHEN

- Granite Counter Tops
- Euro-Style Cabinetry
- Travertine Tiled Floors
- White Appliances
- Stainless Steel Appliances*

BATHROOM

- Garden Style Tubs*
- Dual Sink Vanities*
- Granite Counter Tops
- Designer Fixtures & Accessories

INTERIORS

- Side-by-Side Washer & Dryer
- Raised Panel Doors
- Walk-in Closets*
- Dual Master Suite Floorplans*
- Separate Dens*
- Concrete Insulated Common Walls
- Wired for High Speed Internet Access
- Central Heating & Air Conditioning
- Mirrored Wardrobe Doors
- Elevated 9-12 foot Ceilings*
- Travertine Tiled Entries
- Separate Storage Areas*
- Neutral Color Scheme
- Oversized Balconies*
- Floor to Ceiling Double Pane Windows*
- Spectacular Ocean & Mountain Views*

**In select units only*

8775 Costa Verde Blvd.
San Diego, CA 92122
858.202.0233 phone

towers@gardencommunitiesca.com

www.TowersAtCostaVerde.com

Professionally Owned and Managed By:



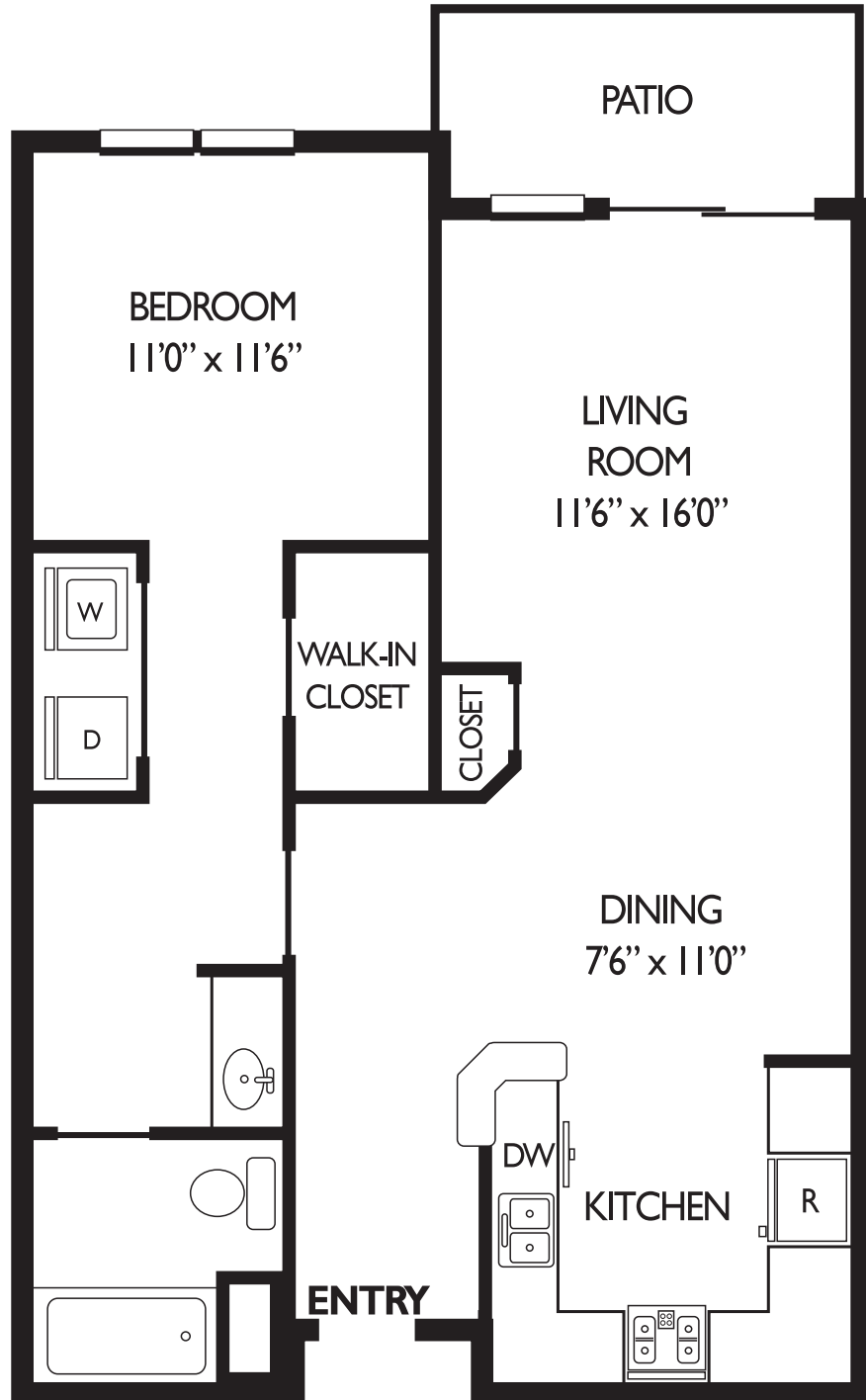
ONE BEDROOM FLOOR PLAN

Catalina

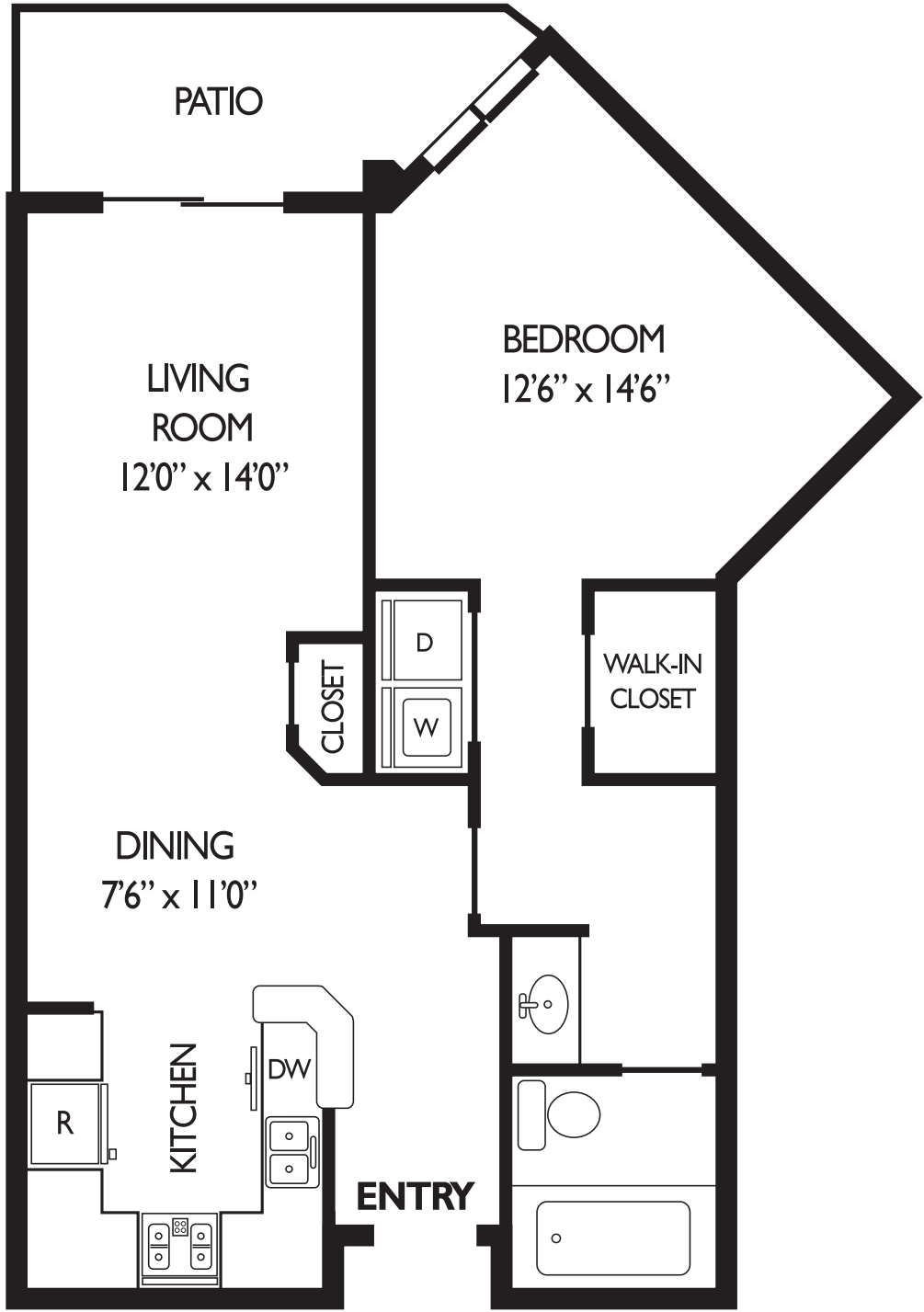
1 Bedroom, 1 Bath

South Tower 846-937 Sq.ft.

North Tower 872-999 Sq.ft.



ONE BEDROOM
FLOOR PLAN



Regency

1 Bedroom, 1 Bath
South Tower 960 Sq.ft.
North Tower 983 Sq.ft.

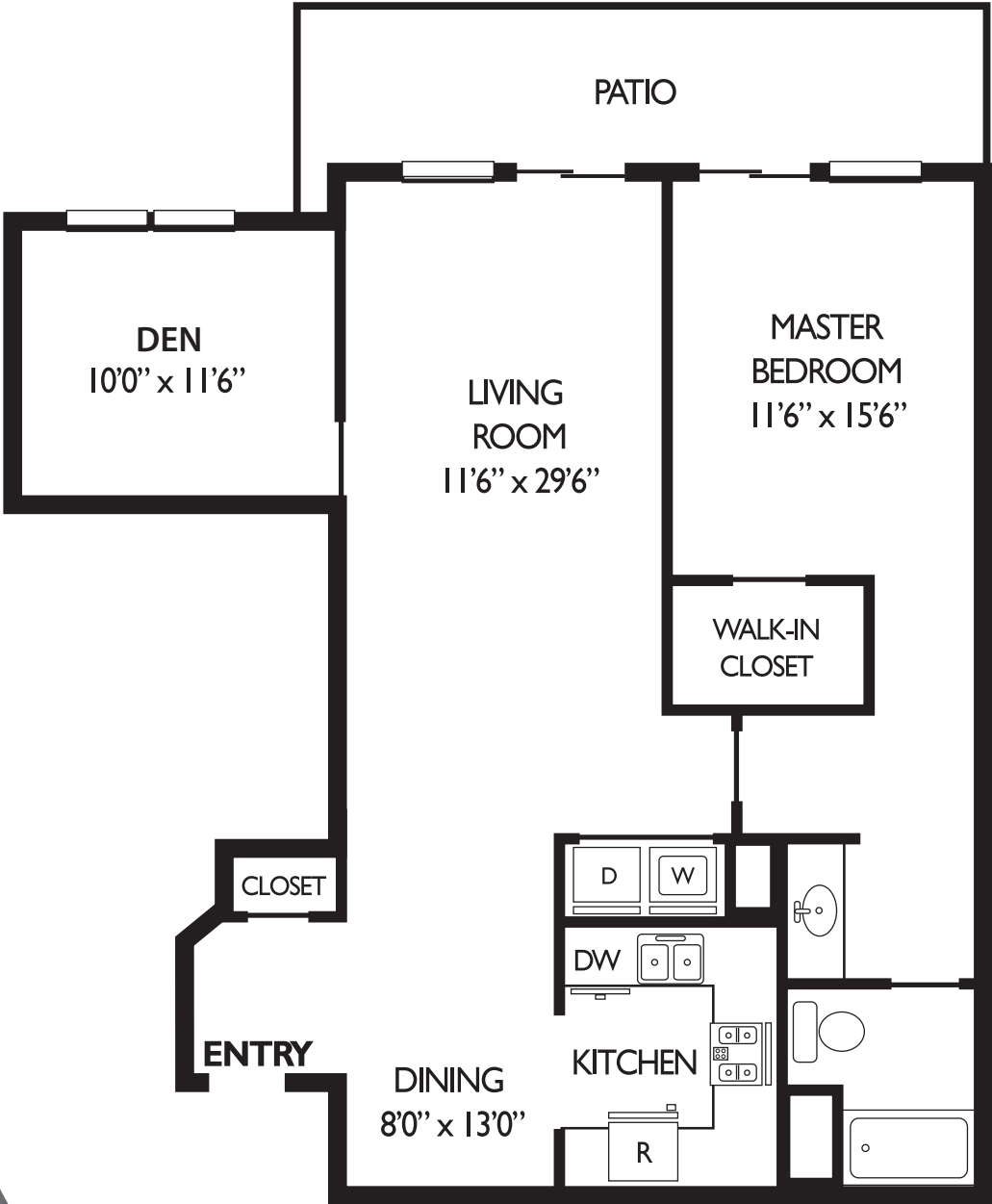


In our continuing policy of research and improvements, Garden Communities reserves the right to change product design, specifications, materials, features, prices and terms without prior notice or obligation. Room dimensions, floor plans, maps and square footages are approximate.

ONE BEDROOM
FLOOR PLAN

Meridian

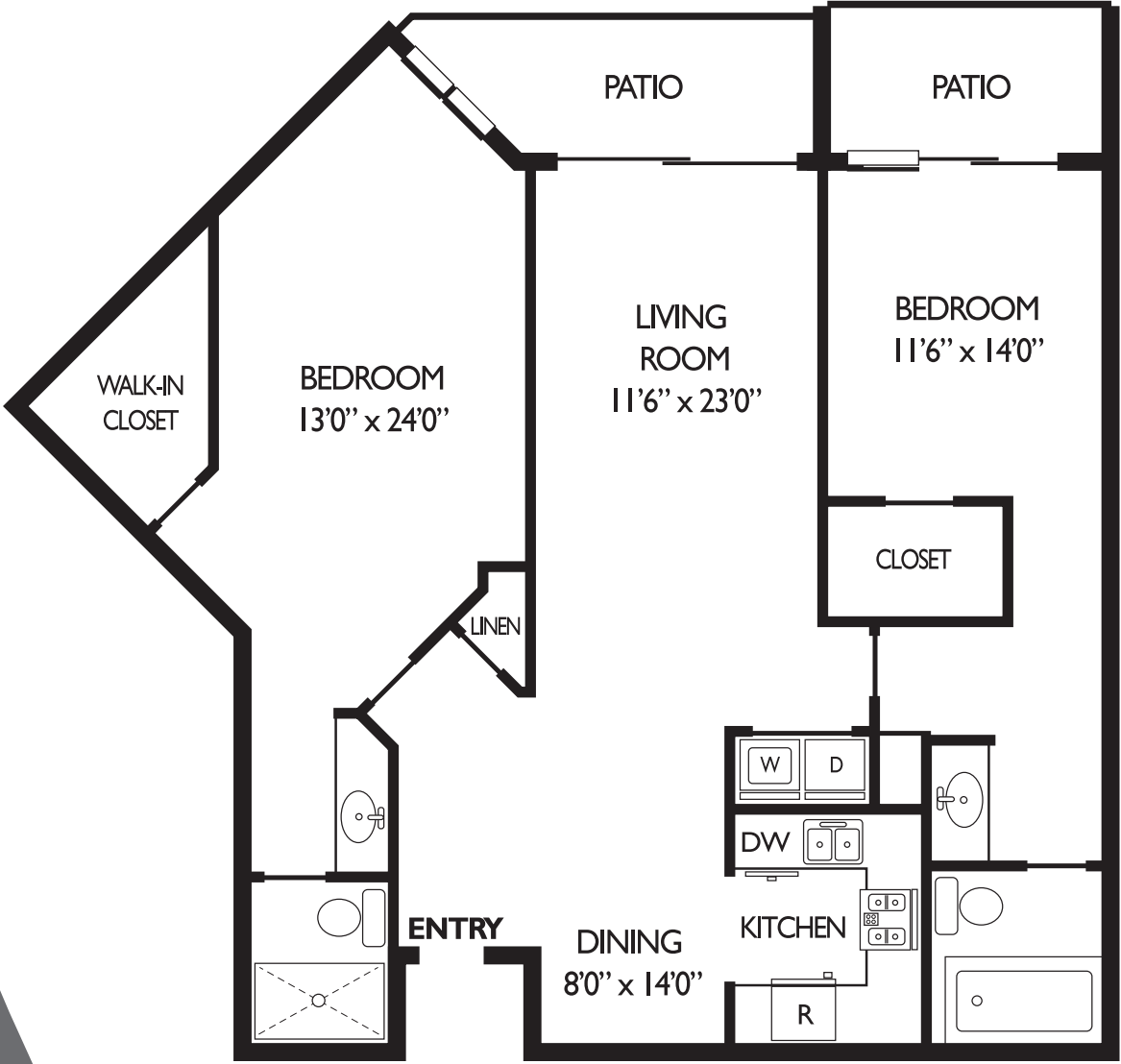
1 Bedroom, 1 Bath
South Tower 967 Sq.ft.
North Tower 1,140 Sq.ft.



TWO BEDROOM
FLOOR PLAN

Cabrillo

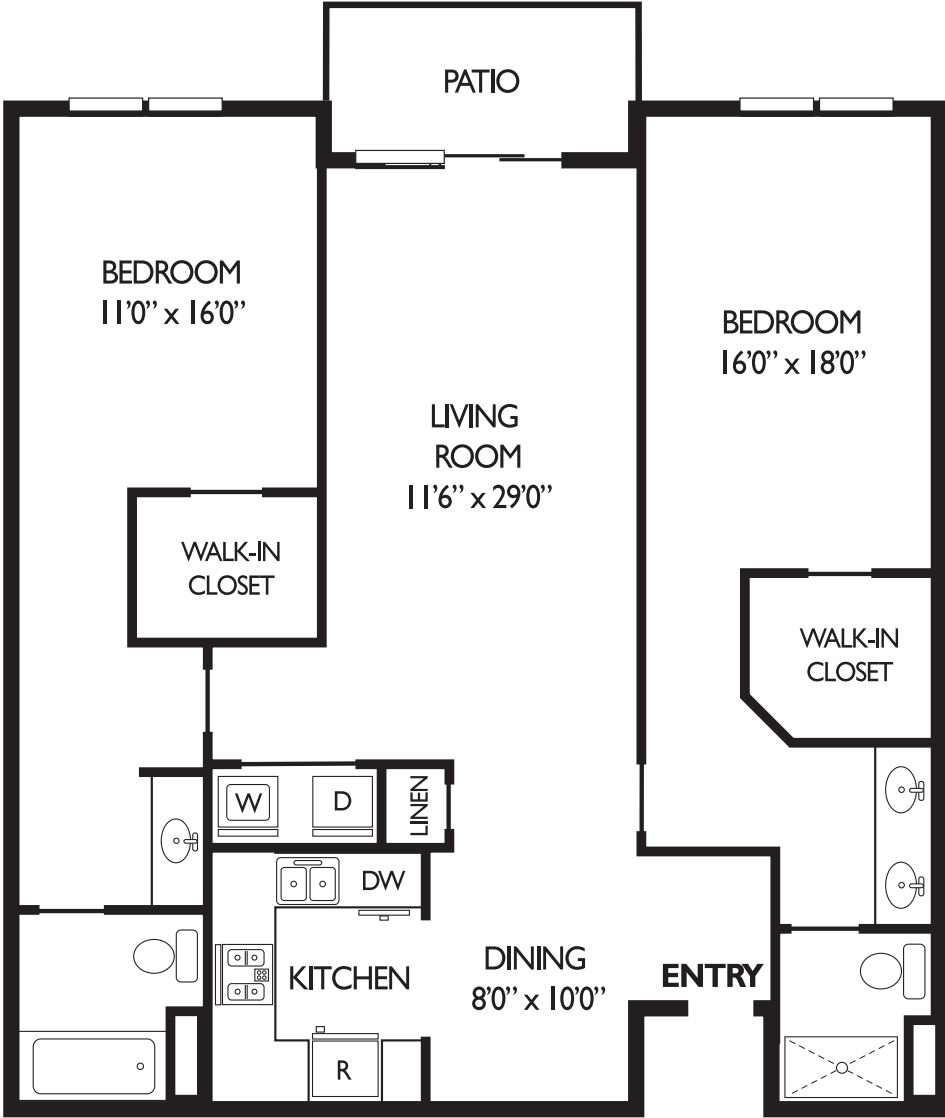
2 Bedroom, 2 Bath
South Tower 1,469 Sq.ft.
North Tower 1,418 Sq.ft.



TWO BEDROOM
FLOOR PLAN

Pacifica

2 Bedroom, 2 Bath
South Tower 1,253-1,389 Sq.ft.
North Tower 1,276-1,413 Sq.ft.



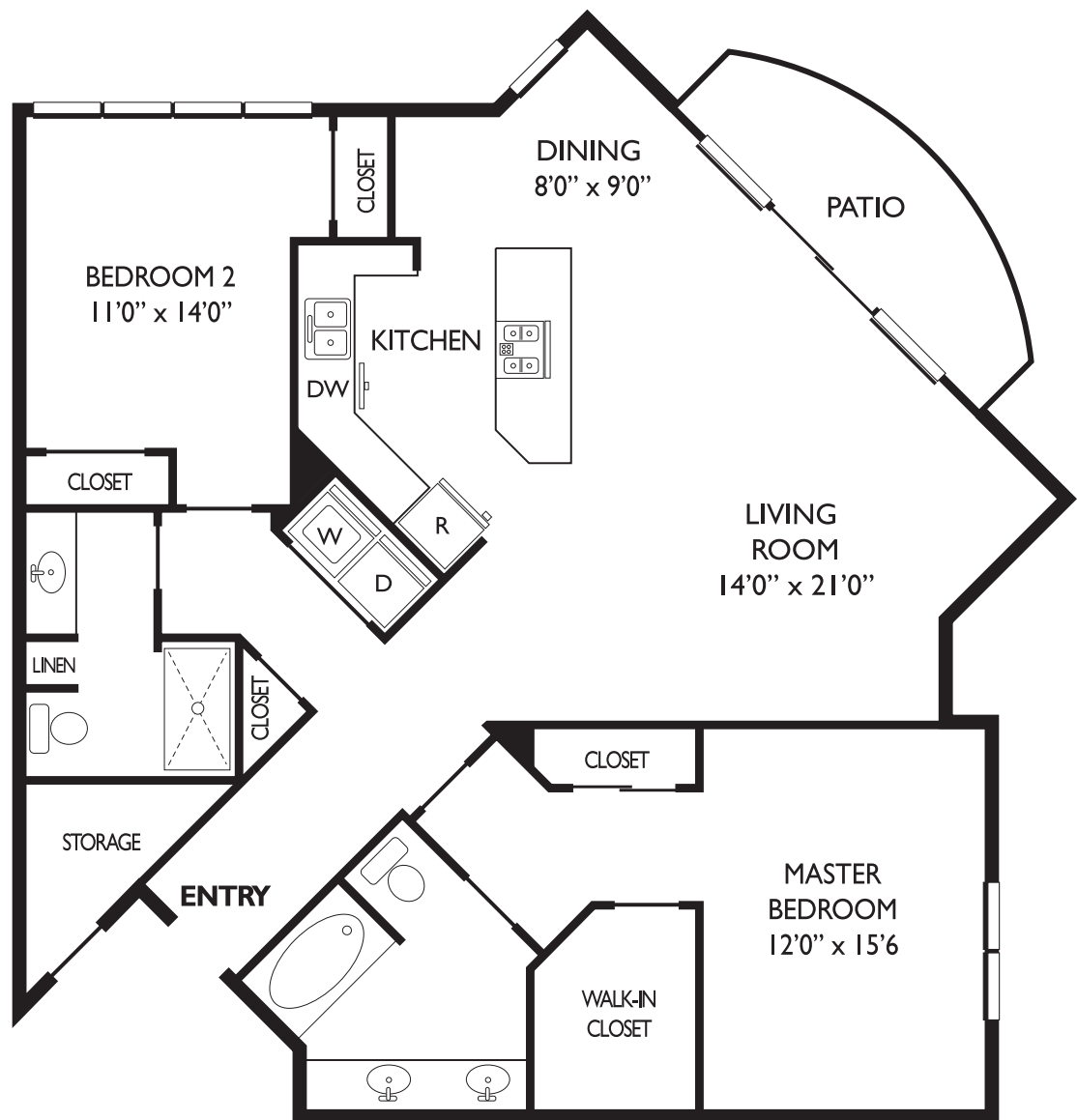
TWO BEDROOM FLOOR PLAN

Royale

2 Bedroom, 2 Bath

South Tower 1,433 Sq.ft.

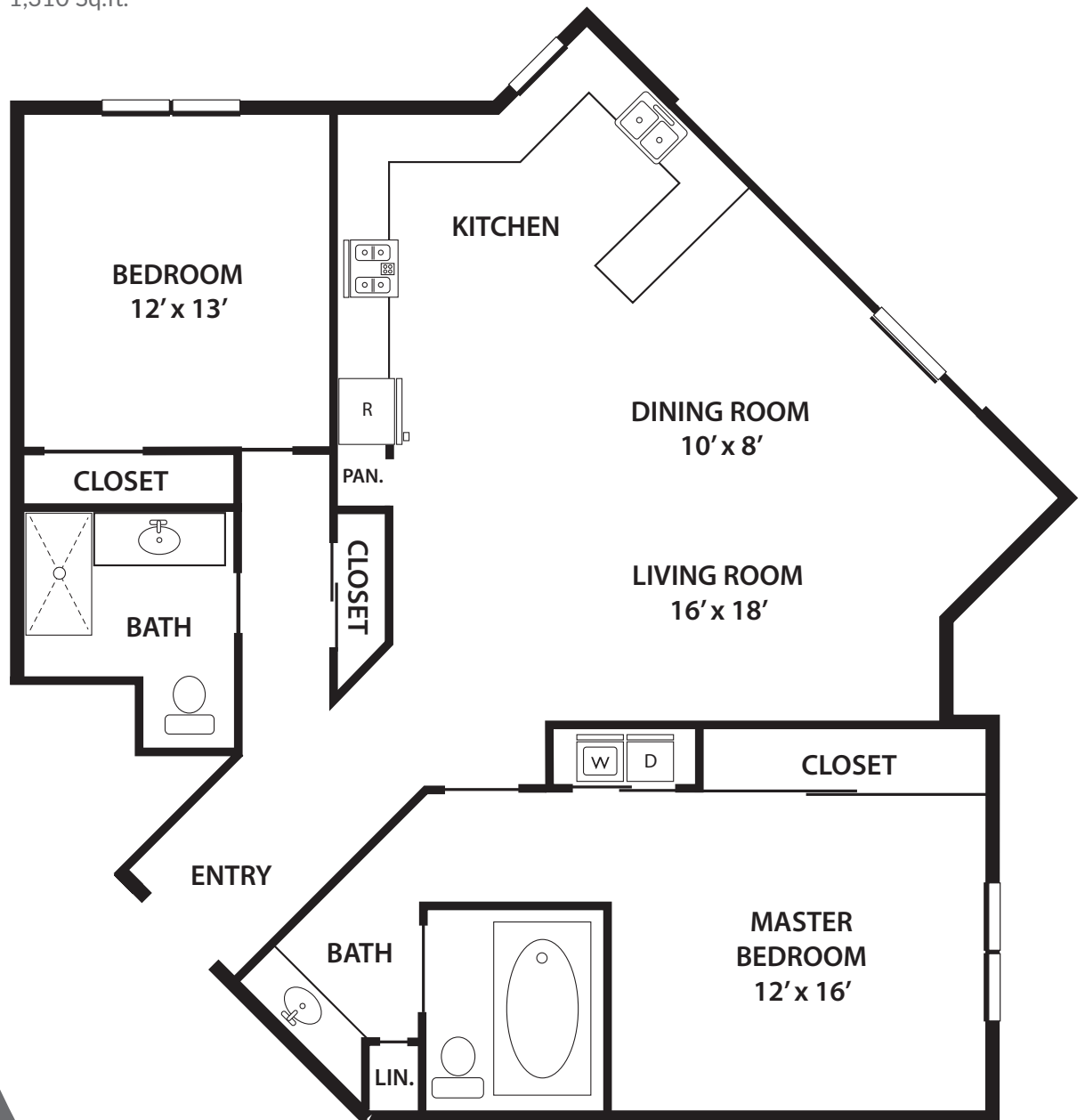
North Tower 1,491 Sq.ft.



TWO BEDROOM
FLOOR PLAN

Royale II

2 Bedroom, 2 Bath
1,310 Sq.ft.



THREE BEDROOM FLOOR PLAN

Montecito

3 Bedroom, 2 Bath

South Tower 1,416 Sq.ft.

North Tower 1,485 Sq.ft.

