



ENCINO PALMS OFFERS YOU A GARDEN STYLE COMMUNITY DESIGNED FOR YOUR CONVENIENCE.

APARTMENT FEATURES:

- 2 bedroom apartment homes
- Central Air & Heat
- Fireplace in select units
- Full size washer and dryer
- Generous closet, linen & storage space
- Kitchen pantries
- Mirrored wardrobe doors
- Neutral color palette
- Private patios or balconies
- Spacious Floor Plans
- Vaulted ceilings in select units

COMMUNITY FEATURES:

- 24 Hour Maintenance dispatch service
- Assigned Covered and Controlled Access Parking
- Cats welcome with additional deposit, sorry no dogs
- Controlled access building entrance
- Courtesy patrol service
- Fully-Equipped Fitness Center
- Garden courtyard
- Private Whirlpool and spa area
- Professional onsite management office
- Saunas

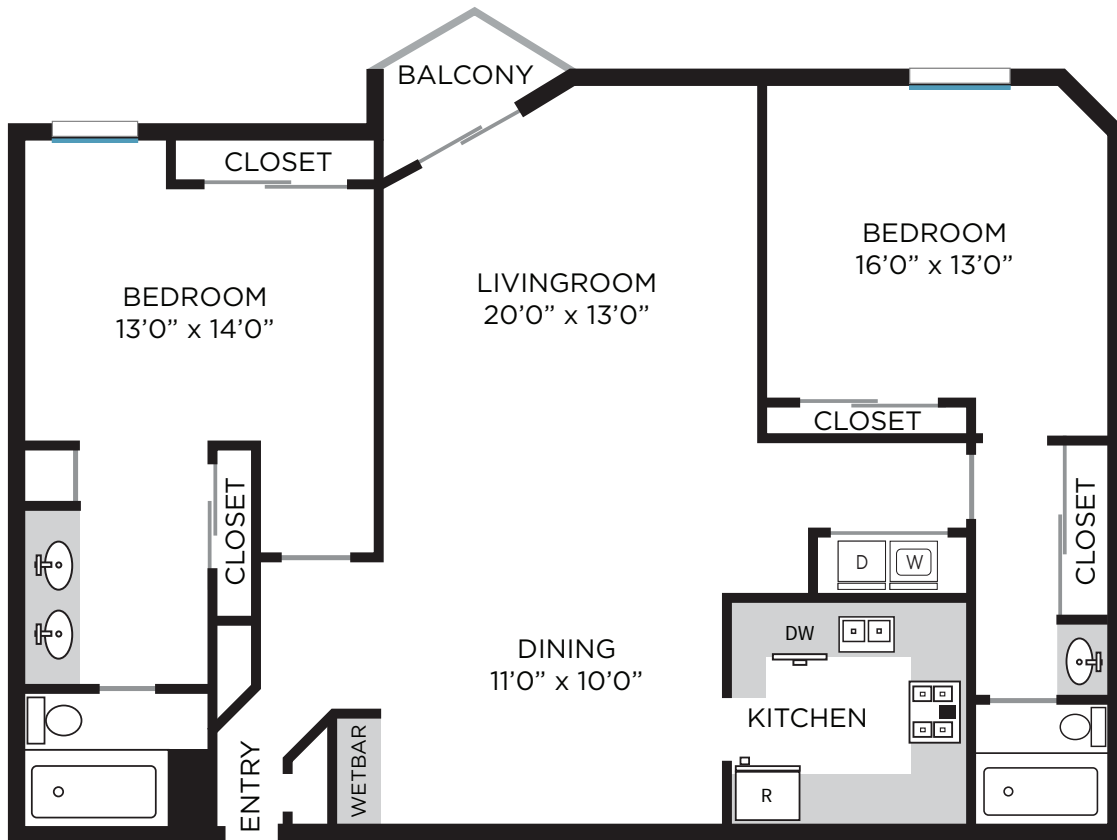


FLOORPLAN A

2 BD 2 BA 1,200 SQ.FT.



FLOORPLAN B
2 BD 2 BA 1,360 SQ.FT.



FLOORPLAN E
2 BD 2 BA 1,332 SQ.FT.

